

Digital Cube, Inc.

<http://www.i-station.com>

Contents

You can enjoy the movies, music or pictures anytime and anywhere with the player, which could be also used as an electronic dictionary or for a study and others.

Please read this User's Manual carefully before using the player.

. It's recommended that you obtain pieces of information related to the player at our website (<http://www.i-station.com>). If you have additional questions, you can contact us for their answers.

. You can get data related to the player (firmware, USB chip, manual, etc.) updated so that it could serve as a latest version.

### **Before using the player / 3**

1. Preparations before getting started / 4
2. Name of parts / 7
3. Power On/Off / 10
4. Battery / 10
5. Connecting the player to the PC / 14
6. Touch pen/buttons / 20
7. Remote control / 21
8. Getting updated / 23

### **Using the Player / 25**

1. Video Player / 26
2. Audio player / 32
3. Photo album / 41
4. Dictionary / 46
5. Game(entertainment) / 48
6. File manager / 49

7. E-Book / 51
8. FM Radio / 55
9. Paint / 60
10. Recording / 62
11. Calculator / 65
12. Settings / 68
13. Using the wired remote control / 72
14. Connecting the player to TV / 81

**Miscellaneous / 84**

1. FAQs / 85
2. Specification / 86

Before using the player

## 1. Preparations before getting started

### 1. Cautions when using the player

This rechargeable player serving as a mass storage USB drive requires a scrupulous care for its uses.

Please keep in mind the following instructions for its more convenient and stable uses:

- 1) Because the player serves as a mass storage USB drive, it's not expected that it will permanently and stably carry data with it. Accordingly, important data need to be separately backed up.
- 2) Do not put the player around a magnetic field. In particular, you must not use a magnetic holder for vehicles to accommodate it.
- 3) It's recommended that the player be recharged at a normally-working temperature. You must not recharge it at a condition(for example, in a parked car) with high temperature, as in the summer.
- 4) Do not put a shock on the player when used. You'd better not use it while taking exercise.
- 5) It's desirable that you try a regular formatting(FAT32) on the player. It isn't recommended.
- 6) Keep the player away from the direct rays of the sun or a heating source. Incidentally, don't leave it exposed to a condition(for example, in a parked car) with high temperature, as in the summer.
- 7) Do not expose the player to a high-moisture environment because such a condition may result in its malfunction.
- 8) The indoor temperature of a vehicle in the summer may amount to more than 60°C. Be careful not to leave the player in such a condition for hours(Normally-working temperature: 5°C~45°C)
- 9) When using an AC Adapter for vehicles, connect it after having started your car, and remove it from the car when it stops.
- 10) Do not wipe the player with such chemical solvents as alcohol or benzene since they may cause a failure to the player or you.
- 11) If you want to use the player for a long time, you'd better use a separate AC Adapter after removing the battery from it.

- 12) A continuous uses of earphones may cause a physical disability.
- 13) Watch out for an electric shock when applying an AC Adapter to a power supply.
- 14) Do not use the player at the wheel.
- 15) Do not disassemble, repair or attempt to modify the player without a professional help.

## **2. Components**

The components of the player are subject to change without notice for quality improvements.

PMP : i-STATION

<Basic>

Earphone

USB cable

USB host cable

AC Adapter

Battery

Hand strap

CD

User's Manual

Quick Guide

TV composite cable(CVBS cable)

Audio cable

S-video cable

Wireless remote control

LCD cleaner(L)

Soft case

<Optional>

Wired remote control

Charger for vehicles, Battery charger

### **3. Minimum requirements for the PC**

To connect the player to the PC, you need it to meet the following minimum requirements:

- 1) CPU: Pentium III 500MHz or higher / Macintosh iMac G3 or higher
- 2) OS: Windows 98SE/ME/2000/XP, or Mac OS 9.1 or higher
- 3) CD-ROM drive
- 4) Color monitor(SVGA or higher)
- 5) RAM with more than 128MB in its capacity
- 6) USB port(USB 2.0 recommended)
- 7) Hard disc with more than 1GB in its capacity

※ There may be some troubles with a connection to the PC that doesn't meet the minimum requirements above.

## 2. Name of parts

### 1. Top / front



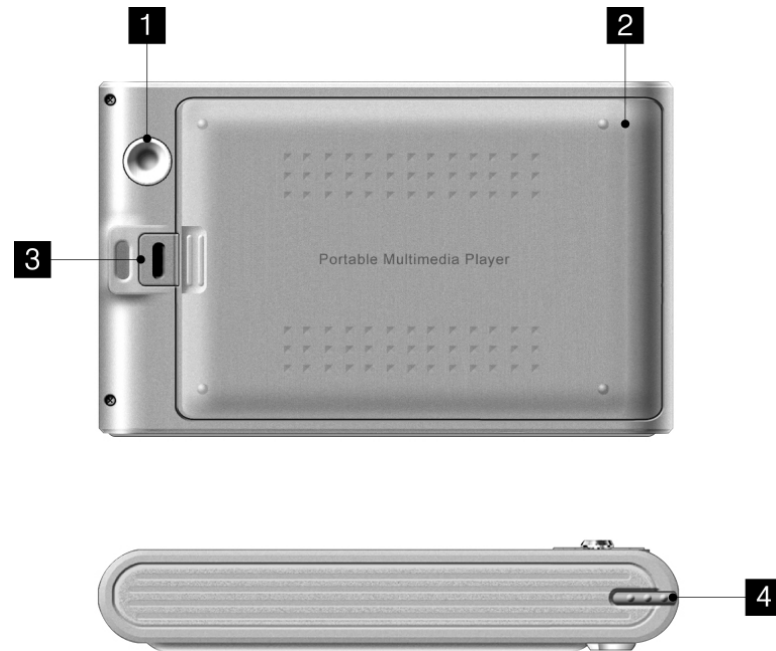
- 1) Power / Hold : Turn the player off/on, or to lock it.
- 2) TFT LCD : Control the player using its touch screen.
- 3) Speaker : Enjoy a sound from the monophonic speaker instead of earphones.
- 4) Infrared sensor/LED : The remote control attendant on the player is equipped with infrared sensor and LED.
- 5) Joystick : Push the joystick upward/downward or to the left/right and then press it to select a menu. It is available when the touch pen not in use.
- 6) Tab button : When using the player without the touch pen, use the Tab button.
- 7) Microphone : Built-in microphone used for voice recording.
- 8) Enter button : Use the Enter button when executing an icon that you select without the touch pen.

## 2. Left / right



- 1) Earphone jack : This standard earphone jack with 3.5mm in diameter is used to connect earphones.
- 3) S-Video out jack : If you want to enjoy high quality video module, it's recommended that you use S-Video out jack to connect to the TV which supports S-Video.
- 4) RESET : Reboot the player by clicking RESET with the touch pen.  
(Uncover a rubber cap on the player, and you can see the RESET button).
- 5) TV-OUT jack: Enjoy a video mode by connecting TV-OUT jack to the TV Video-in.
- 6) Volume : Press the volume button to turn up or down the player(0~40).
- 7) Hand strap ring : Hook hand strap in the hand strap ring when necessary.
- 8) USB jack : Used to connect to the PC, or to another external source in need of USB host cable.
- 9) DC adaptor jack : Used to connect the player to the AC Adapter for its uses or recharging.

### 3. Back / bottom



- 1) Stand hole : Stand the player inclined on the touch pen by inserting it into the stand hole. You can also adjust an angle of inclination by changing its length.
- 2) Battery : Detachable lithium polymer type.
- 3) Battery release button : Release the battery by pressing the battery release button.
- 4) Touch Pen : Manipulate the player by selecting a menu onto the touch screen with the touch pen.

### 3. Power on / off

#### 1. Release HOLD

When HOLD is switched on, the whole functions are locked up.

#### 2. Power on

- 1) If you push the power switch to the left and hold for over 2 seconds, there appears a start window to check the version of the player.
- 2) And then you can see its main screen on which you can select one of its submenus.

#### 3. Power off

- 1) If you push the power switch to the left and hold for over 3 seconds, there appears a message “POWER OFF” to turn off the player.

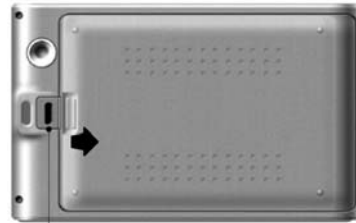
< Tip >

- . If the player fails to work on a sudden, press RESET to reboot it. The RESET button is located in the middle of S-Video jack and TV-OUT jack.
- . You must finish a program you're using before turning the player off.

### 4. Battery

#### 1. Loading / Unloading battery

- 1) After pressing the battery release button, push the battery away in the direction of an arrow for its unloading.
- 2) After fitting the battery in for its loading, push it away so that it gets snapped into the player.



Battery release button

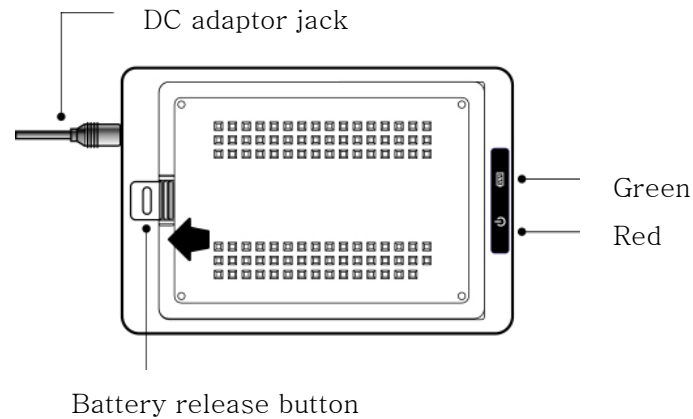
※ Caution : Turn the player off before removing the battery from it.

## 2. Recharging battery

- 1) Connect AC Adapter to DC adaptor jack of the player.
- 2) Plug the adaptor in a power supply, and you will see a red light on the player.
- 3) While the player is recharged, LED will flicker. Once the charge is complete, the LED stops flickering.

## 3. Battery charger(optional)

- 1) Fit the battery in its charger.
- 2) Connect DC adaptor jack to the charger.
- 3) Plug the adaptor in a power supply.



- . Before the player is fully recharged: both the green light(power supply) and the red are turned on.
- . After the player has been fully recharged: the green light(power supply) alone is turned on.

 Caution :

After the player has been fully recharged, remove the charger from it.

#### **4. When the battery falls short**

- 1) When the battery falls short, its indicator shows its insufficiency.
- 2) If you continue to use the player although its battery falls short, it will automatically get turned off, along with a pop-up window informing power-off.

< Tip >

. In case that the battery has been fully discharged, you'd better recharge it for at least an hour before turning the player on again.

. If there appears a message showing that the battery falls short, immediately recharge it.

A continuous use of fully discharged battery may cause damage to the player.

#### **5. Cautions when using the battery**

The battery attendant on the player is a lithium polymer type(2700 mAh/3.7 V).

Its misuses may cause a fire or an emission of high heat. Stick to the following instructions for their prevention:

- 1) Keep the battery away from a heating source or a chemical solvent.
- 2) Use the AC Adapter attendant on the player or any other authorized battery charger when recharging the battery.
- 3) Never insert the battery into the player if it has soaked in water.
- 4) Never set the battery on fire when doing away with it.
- 5) In case that the battery has been fully discharged, you'd better recharge it for at least an hour before turning the player on.
- 6) If you want to use the player for a long time, you'd better use a separate AC Adapter after removing the battery from it.
- 7) Prior to an initial use of the battery or if a long time has passed since its last use, you'd better fully recharge it.

8) A battery has a limited lifetime. For example, lithium polymer batteries can be about 500 times rechargeable at a normally-working condition, showing so called “Memory Effect” that refers to a reduction in their lifetime.

9) Different from nickel-cadmium(NiCad) or nickel metal hydride(Ni-MH) batteries, the lithium polymer batteries have no memory effect at their initial uses, which means that it would be better to frequently recharge a yet-to-be-fully-discharged battery than to recharge a fully discharged one for a long time.

### **What is Memory Effect?**

Memory Effect refers to a phenomenon where, if you repeatedly recharge yet-to-be-fully-discharged nickel-cadmium(NiCad) or nickel metal hydride(Ni-MH) batteries, their lifetime is reduced because they start being recharged from the place where they were last discharged.

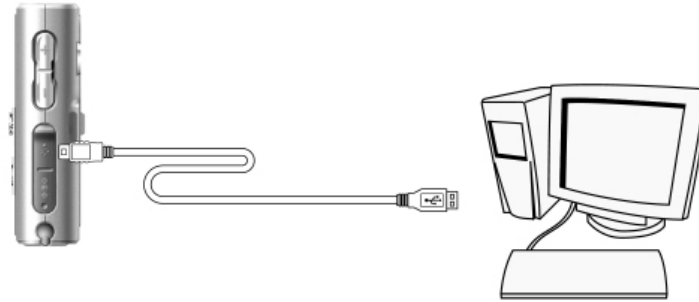
### **6. Battery duration**

	Charging time	Playback time	
		Video	Audio (on the condition LCD is turned off)
Standard	About 4hrs	About 7hrs	About 13hrs
Large	About 5hrs	About 10hrs	About 20hrs

## 5. How to connect to the PC

### 1. Connecting the player to the PC

Connect the player to the PC using a USB cable after turning the former as shown in the figure.



### 2. In case the PC is operated under the versions above Windows ME

You don't have to install a separate USB driver for the PC in case that its OS belongs to one of Windows ME/2000/XP.

A connection of the player to the PC would enable the latter to automatically recognize the former.

- 1) Connect the player to the PC after turning the former on.
- 2) Then, you can see on the display an icon showing the player has been successfully connected to the PC.

### 3. Installing the USB driver for Windows 98SE

In case that the PC is operated under Windows 98SE, you should install a separate Windows 98SE driver before connecting it to the PC.

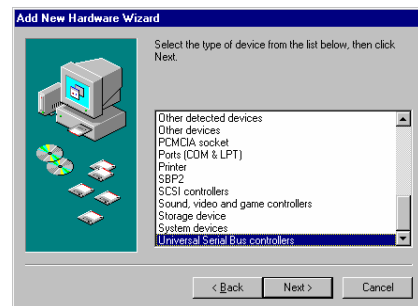
Insert into the CD-ROM drive the CD(Windows 98SE driver included) attendant on the player, and then connect it to the PC using its USB cable. If there appears the figure as shown below, step on the following process:



1) If there appears Add New Hardware Wizard, click “Next”.



2) Check in “Select an applicable driver among a list of displayed drivers”, and then click “Next”.

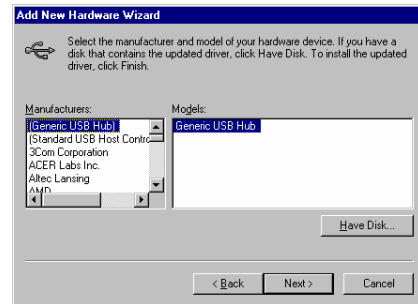


3) Select “Universal Series Bus(USB) Controllers”, and then click “Next”.

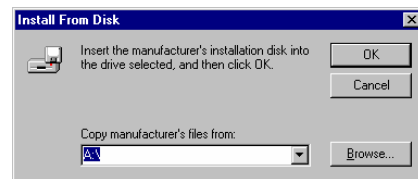
- In case that the PC can't recognize the player :

a. Select “Hard Disc Controllers”, and then click “Next”.

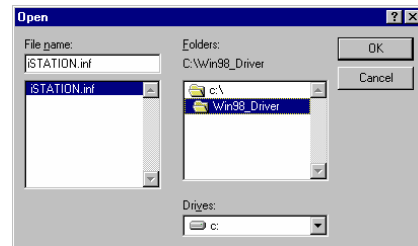
b. Click “Have Disc”.



4) Check in “General USB Hub”, and then click “**Have Disk**”.



5) Click “**Browse**” to select where to search.



6) Select the CD-ROM drive, and then click to the Win98\_Driver folder to select the **iSTATION.inf** file. Click “**Confirm**” to continue.



7) Click “OK” after checking where an applicable file is located.



8) Click “Next” after checking how the USB driver has been recognized.

9) Click “Next” after checking where the USB driver is located.



10) Click “Finish” to finish installing the USB driver

#### 4. Checking if the player has been successfully connected to the PC

If the player has been successfully connected to the PC, you can see a removable disc called “i2” at My Computer.

#### 5. Disconnecting the player from the PC

If you want to disconnect the player from the PC, step on the following process :

- 1) Right-click the mouse on a hardware disconnection icon on the tray of task bar to show “Safely remove USB Mass Storage Device-Drive(i)”. Left-click the mouse on it.



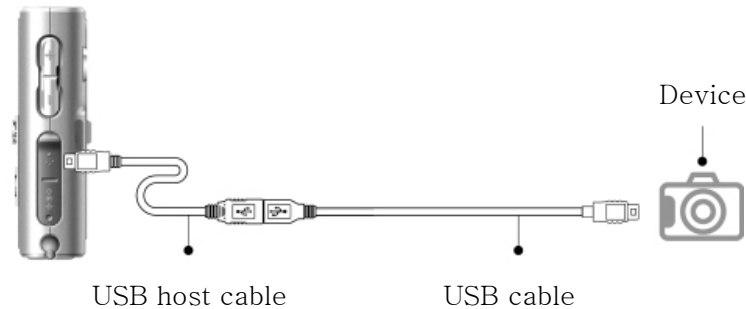
 Caution :

Icons on the task bar may have been hidden. Then, check in “Display Hidden Icons” to continue.

#### 6. USB OTG(On-The-Go): connecting other USB drives to the player

You can transfer data to the player by directly connecting other USB devices(for example, a digital camera) to it. Push the power switch to the left and hold for over 2 seconds to turn the player on.

And then, step on the following process :





Caution :

The function of USB OTG(HOST) is available to the player. If you want to connect a removable HDD to to the player, never fail to plug the HDD in an external power supply.

## 7. USB OTG(On-The-Go) : transferring data

- 1) If you have successfully connected the cable as shown above, there will appear a window to connect the USB host cable.
  - 2) Click “**Trans, Start**” to transfer data from an external USB drive to the player.
  - 3) If data have been successfully transferred, there will appear “**Completed!**”.
- Then, disconnect the USB host cable.



Caution:

Be careful not to disconnect the USB host cable while data are being transferred to the player.

### < Tip >

. If data transfers have failed, there appears “**Transmission Error**”.

Then, retry to connect the USB host cable.

. If there is no space to store data in, there will appear “**Disk Full**”.

Then, retry to transfer data after having secured an additional space to store them in.

. Transferred data are stored in such sequentially-created folders as start from “DSK00000”.

## 8. Transfer / store / delete file

- 1) Check if the “i2” drive has been successfully recognized.
- 2) Execute “Copy(Contrl+ C)” or “Cut(Contrl+ X)” on a file you want to copy or cut.
- 3) Click to the “i2” drive. And then, execute “Paste” to paste the file you copied or cut onto an applicable folder.
- 4) If you want to delete a file in the “i2” drive, press “Delete” on the keyboard.

## 6. Touch pen / buttons

### 1. Using Touch Pen

. Click: Use the touch pen to click an icon on the display by softly touching it.

. Drag: Use the touch pen to locate an icon at any other place by dragging it, which method is applied to the use of a PC mouse.

< Tip >

. The Drag function is used when you work with Volume Bar or Paint.

### 2. Standing the player inclined on the touch pen

1) Pull out the touch pen from the player.

2) Adjust an angle of inclination by changing its length.

3) Stick the pen in the stand hole on the back, and then stand the player inclined on it.

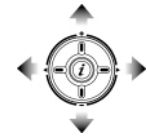


### 3. Using buttons

1) Joystick

Movable Four-Ward: You can move the joystick upward/downward or to the left/right.

Select(click): You can select and execute an icon by pressing the joystick on it.



2) Tab

You can use the tab button to jump onto different icons or groups on a menu.



3) Enter

Execute an icon by clicking the enter button after having jumping onto it with the tab button.



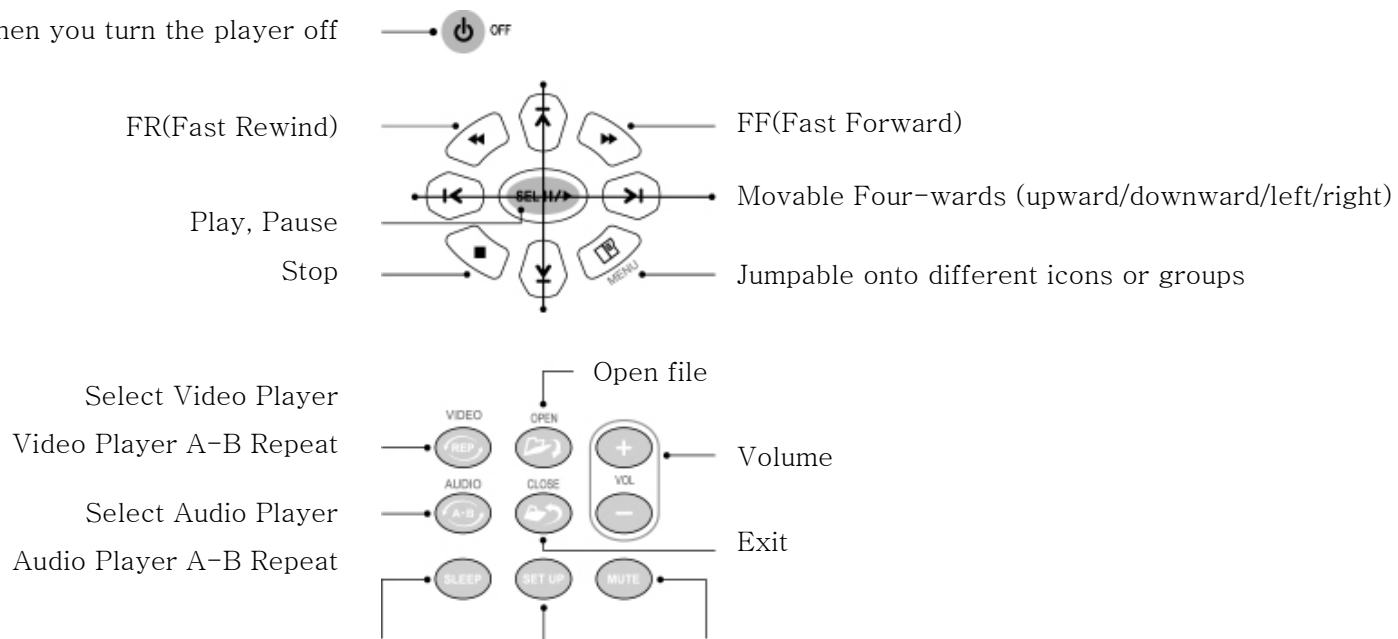
4) Volume

Use the volume button to turn up or down the player(0 to 40).

## 7. Remote control

### 1. Using wireless remote control

Usable when you turn the player off

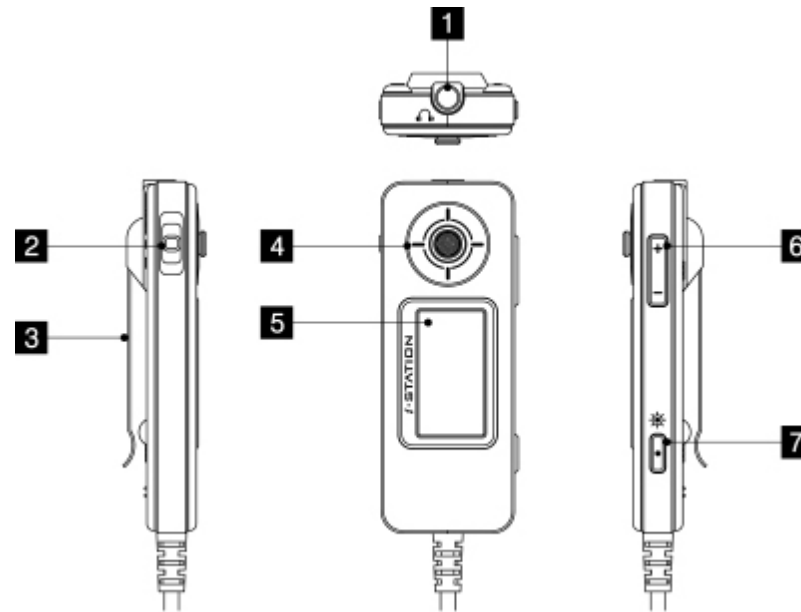


Sleep Timer setting: Set the time when the player gets automatically turned off.)

< Tip >

. The wireless remote control is more useful and convenient when the player is connected to the TV.

## 2. Using the wired remote control




- 1) Earphone jack : Used for connecting earphones
- 2) Power/Hold : Move the power switch to the left and hold for a moment to turn off he player.  
If you do the opposite, the wired remote control gets locked up.
- 3) Clip : Clip the wired remote control on a bag or clothes.
- 4) Joystick/Enter : Move the joystick downward/upward or to the left/right to select a menu.  
If you press it on a selected menu, it's executed.
- 5) LCD : Show the status of the player.
- 6) Volume : Adjust the volume.
- 7) Light : Press the “Light” button short. Then, the display lights up.

## 8. Getting updated

### 1. Updating BIOS (Update.bin)

If an upper version of BIOS has been released, you can get it at our website([www.i-station.com](http://www.i-station.com)).

- 1) You can get BIOS(update.bin) updated at our website([www.i-station.com](http://www.i-station.com)).
- 2) Turn on and boot the player, and then check if its menu screen is normally displayed. Ensure that there should remain more than 3 bars on the battery indicator. If there remain less than 3 bars, use an AC Adapter.
- 3) Turn the player on and then connect it to the PC(refer to “Connecting the player to the PC”).
- 4) Check if “i2” at the root folder of the PC has been created, and then copy the downloaded file “update\_i2.bin” to the root folder, when you should be careful not to create an arbitrary folder to copy the file at.
5. Disconnect the USB cable from the player after copying the file at the root folder(refer to “Disconnecting the player from the PC”).
- 6) The player gets automatically updated after disconnecting the cable, and then it’s turned off for its re-booting.
- 7) Re-boot the player after it’s been updated. If you click an icon “i(  )” on the upper right of “Settings”, you can check the version of BIOS.



Caution:


- . In case that the name of the downloaded file has been changed, the player may not get updated. Never change it.
- . After the firmware has been updated, the copied file will be automatically deleted.

### 2. Updating firmware

- . All programs, system files and other data to work the player are installed at its “system” folder, whose deletion may cause a malfunction. It means that you should re-install the firmware using the recovery CD after having formatted its hard disc.
- . The firmware is installed at the “system” folder.
- . You can get the firmware updated at our website([www.i-station.com](http://www.i-station.com))

### 3. Updating USB chip

You can get an upgraded version of USB Chip at our website([www.i-station.com](http://www.i-station.com)).

- 1) Get USB Chip updated at our website([www.i-station.com](http://www.i-station.com)).
- 2) Click in the following order: Settings > Others> Updating USB > Start(refer to Settings  ).
- 3) If there appears a message “Connect USB Drive”, connect the player to the PC.
- 4) Double-click the downloaded version to execute it. If there appears a message “Update Completed”, disconnect the player from the PC.

# Using the Player

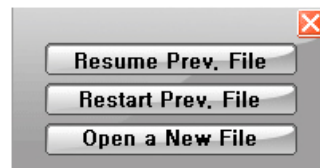
What this User's Manual address mainly concerns how to use the player by manipulating the touch pen. How to handle it by using its buttons will be supplementary covered.


## 1. Using video player

### 1. Open / Play Video File



- 1) Select a video player icon.
- 2) If there appear an introductory pop-up window, click an applicable menu.
  - . Resume the last movie : Continue to see the most recent movie you saw from the place where it stopped.
  - . Restart the last movie : Watch the most recent movie from its beginning.
  - . Open a new movie : Watch a new movie.



- 3) Select "Open New Movie" to display "Video File Manager", in which you can see only files that can be played back by the video player
- 4) Select a file that you want to play back from the file list on the right of the display.
- 5) Click "Execute File(  )" to play back the file.

< Tip >

















- . If the file you last saw has been deleted or damaged, you can select only "Open New Movie".
- . File formats that can be supported in the video player mode: avi, mpeg, mpg, dat, vob, m1v, m2v.
- . While you're playing back a file or has put it to pause, you can't open any other files.

Only after you have stopped it, you can open others.



- . If you have selected a broken file or the one with erroneous extension, there will appear a message "Can't be played back", and then the player will return to the stop mode.

## 2. Video player menu screen



 Battery indicator	 Open file	 Caption	
 Exit	 A-B Repeat	 File information	
 Aspect ratio	 Setting		
 Rewind	 Play	 Forward	 Stop
 Elapsed time/ Total time	 Mute	 Volume indicator	
 Volume bar			
 Navigation bar			

## 3. Rewind / Forward during the playback

- 1) Softly touch the display with the touch pen during the playback to display a video player control window. You can change the time the control window fades out in Settings.
- 2) Click “Rewind/Forward” short (when handling with the joystick, push it to the left/right) to rewind or forward the movie that is being played back by about 10 seconds. ( /  )
- 3) If you don't work on the control window any longer after having clicking the icon, it will fade out.



< Tip >

. If the index information of a file that you want to play back is incomplete or if there isn't its key frame, the Rewind/Forward function may not be supported.

#### 4. FR(Fast Rewind) / FF(Fast Forward) during the playback

- 1) Push the joystick to the left/right long during the playback to fast-rewind/fast-forward the player
- 2) And then push the joystick at a place where you want to play back.



#### 5. Pause during the playback

- 1) Softly touch the display with the touch pen during the playback to display a video player control window.
- 2) Click "Pause(  )" or the joystick.  
Then, the icon has been changed to "Play" and the movie that is being played back is put to pause.
- 3) Click "Play(  )" or press the joystick. The icon will have been changed to "Pause" and the movie that is put to pause is replayed.
- 4) If you don't work on the control window any longer after clicking the icon, it will fade out.



< Tip >

. If the function of "Privacy" in Settings has been checked in when the player is put to pause, the display will show a black frame so that others can't see, while the player gets mute.


#### 6. Stop / Exit during the playback

- 1) Softly touch the display with the touch pen during the playback to display a video player control window.
- 2) Click "Stop(  )" to stop the movie.
- 3) If you want to close the video player mode, click "Exit(  )" .
- 4) If there pops up a message asking if you would continue to close the vide player mode, click "Yes" to close it.


## 7. A-B Repeat

- 1) Softly touch the display with the touch pen during the playback to display a video player control window.
- 2) Click “A-B Repeat()” at the place from which you want to repeat the movie. And you will see <Start A-B Repeat> on the upper left, and the icon is changed to “A-B Repeat(B)” .
- 3) Click “A-B Repeat()” at the place limited to which you want to repeat the movie, and the A-B Repeat starts.

You can see <A-B Repeating> on the upper left of the display, and the icon is changed to “A-B Repeat(A-B)”.


- 4) If you click “A-B Repeat()”, A-B Repeat is released. At that time, the icon is changed to “A-B Repeat(A)”.

## 8. Changing aspect ratio

- 1) Softly touch the display with the touch pen during the playback to display the video player control window.
- 2) Click “Aspect Ratio()” to put the screen in the wide mode(16:9), irrespective of an actual aspect ratio of the movie you're playing.
- 3) If you click the icon again, the screen will be at the full mode. Upon clicking again, it is changed to its standard mode.


※The standard screen mode refers to the aspect ratio an original file that is being played back has.

## 9. Caption On / Off

- 1) Softly touch the display with the touch pen during the playback to display the video player control window.
- 2) Click “Caption On()” while playing back the movie with a caption file to turn off the caption function. If you click the icon again, it's activated.

※Provided that, there has to exist a caption file available to the movie.


## 10. Mute On / Off

- 1) Softly touch the display with the touch pen during the playback to display a video player control window.
- 2) If you click “Mute On()”, there can be no sound heard. If you click it again, you can hear.

## 11. Volume Bar / Navigation Bar

- 1) Softly touch the display with the touch pen during the playback to display a video player control window.
- 2) Adjust the volume by pressing an applicable point of the volume bar or dragging it to another point.  
At that time, the display shows a changed volume value.
- 3) Press an applicable point of the navigation bar. Then, the movie is played back from the point.

## 12. Settings / Help

- 1) Softly touch the display with the touch pen during the playback to display a video player control window.
- 2) Click “Setting(  )”. Then, the player enters the Settings mode.
- 3) Click “Confirm” after having set the player as you please to save the setting.

< Tip >

. If you click “Cancel” or “Exit”, a changed setting isn’t saved.

. If you make the display relatively brighter, a power consumed by the player increases,  
which means that there is a reduction in the power available to the player.



< Display >

. LCD Bright: Lighten or darken the backlight(0~100%).

. Video Settings Brightness: Lighten or darken the screen(0~100%)

. Contrast: Adjust the video contrast(0~100%).

### < Playback >

- . Menu Hide Time: the menu is displayed as long as the time you set(3sec., 5sec., 7sec., 10sec.).
- . After File Ends: Set how the player will react after the movie has stopped(Stop, Serial Playback, Power Off).
- . Aspect Ratio: Set the size of the screen(Standard, Wide, Full)
- . Menu Clarity: Set the degree to which the menu on the screen is transparent(30%, 50%, 70%, Off).
- . Privacy Mode: Click “Enter”. Then, the player gets mute with its screen getting black. If you click it again, it returns to its previous status(On, Off).

### < Help >

- . Click “Help( ? )” to get a simple help about the player.

### 13. View video player groups

The video player is composed of 5 groups.

Jump onto those groups by pressing the tab button on the player, and then select an item by clicking an icon with a use of joystick.



If you press the joystick on a selected icon, it's executed.

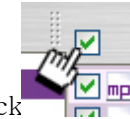


## 2. Using audio player

### 1. Open / Play audio file



- 1) Select an **audio player icon**.
- 2) Click “**Open Audio File**(  )” to enter “Audio File Manager”.
- 3) If, among folders in a folder list window, you select one with applicable audio files, you can see the audio files in a music list window. Then, check in the ones you want to enjoy.
- 4) If you want to select them all, check in “ALL”. Upon re-checking it in, it’s released.
- 5) Click “Execute File(  )” to open applicable files, and then “Play” to play them back.



< Tip >

. File formats supported: mp3, ogg, wma

### 2. Audio player menu screen



Battery indicator



Exit



Navigation bar



Rewind



Play



Stop



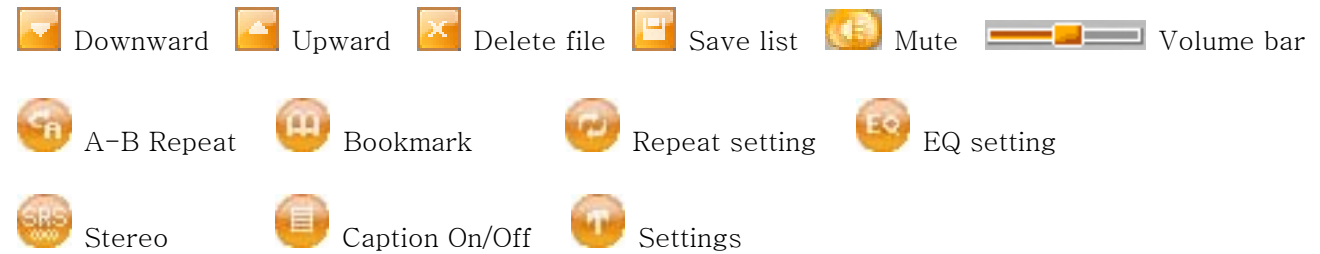
Pause





Forward




Open/Add file





### 3. Rewind / Forward

- 1) Click “**Rewind/Forward**(  ,  )” **short** during the playback to play back the previous/next file.
- 2) If you hold on to click the icon during the playback and release it at the place limited to which you want to play back, the file is played from that place. You can use the touch pen to locate the navigation bar at an applicable place from which the file is played back.


### 4. Pause

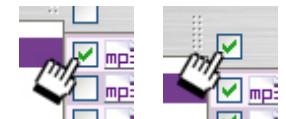
- 1) Click “**Pause** (  )” during the playback to put the music to pause.
- 2) If you press “Play”, it is replayed.


### 5. Stop / Exit

- 1) Click “**Stop**(  )” to stop the music.
- 2) If you want to close the audio player, click “**Exit**(  )”.
- 3) Then, there pops up a message asking if you would continue to close the audio player. Click “Yes” to close it.

### 6. Add file

- 1) Click “**Open Audio File**(  )” to enter “Audio File Manager”.
- 2) Check in the files you want to hear from a music list window.  
If you want to select them all, check in “ALL”. Upon re-checking it in, it’s released.



3) Click “**Execute File**(  )”.


4) If there appears a message asking if you would continue to delete the last play list, click “Yes/No” to play back: If you click “Yes”, it is deleted and there remains only the ones you have selected in the current file list. If you click “No”, they are added to the last play list.


## 7. Save list

1) Click “**Save List**(  )” while playing back the player or when it stops to save the current file list.

2) If there pops up a message asking if you would continue to save the current play list, click “Yes/No”: If you click “Yes”, the current play list overwrite the last play list. If you click “No”, it’s saved as a new play list.

## 8. Open list

1) Click “**Open File**(  )” to enter Audio File Manager.

2) Press “**Execute File**(  )” after selecting applicable files saved in the file list window to play them back.

If there is no file saved in the list, the next file will be played back.

< Tip >


. A list file is saved as the one with “.pls” format.


. List files are saved into the audio folder in such order as starts from “Music\_001.pls”.

. You can change the name of a list file by right-clicking the mouse on it.

. You can save up to 999 lists.

## 9. A-B Repeat

1) Click “**A-B Repeat**(  )” at the place from which you want to repeat the file, and the icon will be changed to “A-B Repeat(B)” .

2) Click “**A-B Repeat**(  )” at the place limited to which you want to repeat the file, and the A-B Repeat starts. The icon is changed to “A-B Repeat(A-B)”.

3) If you click “A-B Repeat(

## 10. Bookmark

You can set the place from which you want to bookmark

1) Click “**Bookmark**(

2) Bookmark setting is completed along with a message informing the bookmark has been saved, when you can see the bookmark indicator on the file information window.



3) Click the **bookmark icon short** during the playback. Then, the player is played back from the place at which the bookmark has been set. As long as there remains a bookmark-set file in the file list, the bookmark setting continues to be effective.

< Tip >


. If you set a new bookmark or close the audio player, or if there doesn't remain a bookmark-set file in the file list, the last set bookmark is deleted.

. You can set only a single bookmark in the audio player mode.


## 11. Repeat setting

1) Click “Repeat Setting” during the playback to change the repeat setting and its indicator on the file information window.

 Repeat only the current file(track)


 Sequentially repeat all the files(tracks) in the play list

 Shuffle and repeat files(tracks) in the play list.

 Play through all the files(tracks) in the play list once.


## 12. EQ setting

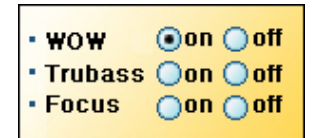
You can set EQ in the EQ Setting mode.

- 1) Click “EQ(  )” to change the EQ mode. And then, check a changed EQ mode on the file information window. (NORMAL, ROCK, JAZZ, CLASSIC, POP, etc.)

## 13. SRS setting

You can enjoy 3D stereo sounds.

- 1) Click “SRS(  )” during the playback to display a WOW pop-up window.
- 2) Select “WOW On” for an additional menu setting. When WOW is off, you can't select neither “Trubass On” nor “Focus On”.




< Note >

. “SRS” is a registered trademark of **SRS Labs, Inc.**

Technical know-how that concerns WOW is under the license of the same.


Because the volume gets considerably louder when set to SRS, you'd better adjust it.

## 14. Delete a file from the file list

- 1) Select the file you want to delete.
- 2) Click “Delete(  )”. If there pops up a message asking if you would continue to delete, click “Yes” to delete it from the file list.

## 15. Execute LDB Manager



You can automatically enter song lyrics using LDB Manager(refer to “LDB Manager”).

- 1) Click “Caption On(  )” during the playback, and the caption indicator on the file information window will be lighted up.

Then, you can see a text in the file list window.




## 16. Play list layout(Changing the order in which the files are played back)

1) Click "▲/▼(  /  )" after having selected a file you want to locate at another place to move it upward or downward.

This function is available during the playback.


## 17. Mute

1) Click "Mute(  )" to sound the player off. At that time, you can see the mute indicator on the file information window.

< Tip >

. If you adjust the volume during the mute mode, it's automatically released.

## 18. Settings / Help

1) Click "Setting(  )" to enter the Settings mode.

2) Click "Confirm" after having set the player as you please, and the setting will be saved.

< Tip >

. If you click "Cancel" or "Exit", a changed setting isn't saved.



### < Power setting >

- . Power save mode: Turn off the player after the time you have set(On, Off)
- . LCD Off Time: Set the time for the power save mode(10sec., 20sec., 30sec.)
- . ID3 Tag: Display ID3 Tag information(On, Off).
- . Sleep Timer: Set the time when the player gets automatically turned off(10min., 30min., 1hr., 2hrs., Off).
- . Select Skin: Choose among various skin's.
  
- . FN Reset: Reset the name of listed files so that it starts from "Music\_001".

### < Help >

If you click "Help( ? )", you can get a simple help about the audio player.

## 19. View audio player groups

The audio player is composed of 6 groups.

Jump onto them by pressing "Tab" on the player.

And then select an item by clicking an icon with a use of joystick.

If you press the joystick on a selected icon, it's executed.



## 20. Installing LDB Manager

You can edit the song lyrics of audio files using LDB Manager.

Click to “i-STATION\_LDB Manager Setup” at the LDB Manager folder contained in the CD attendant on the player.

And then step on the following instructions to install the LDB Manager:

- 1) Double-click the LDB Manager program.
- 2) Select a language to install.
- 3) Click “Next” to continue.
- 4) The Licensing Agreement will be presented. Click “Yes” to continue after reading it.
- 5) Click “Next” to continue.
- 6) Click “Finish” to finish installing.

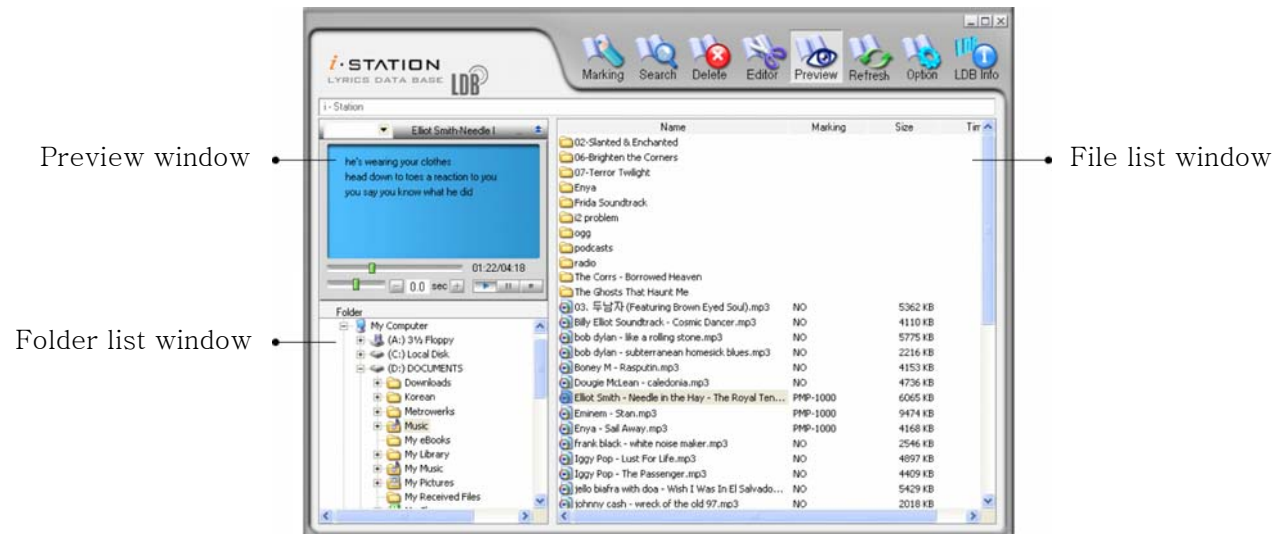
< Tip >

Because song lyrics their provider services can be downloaded via the Internet, the PC must be connected to the Internet to automatically enter and edit song lyrics using the LDB Manager.

### 20-1. Execute LDB Manager

- 1) Double-click “LDB Manager” on the background screen to execute it.

For its execution, you can also step on the following: “Start → Programs → i-station → LDB Manager”.



### 20-2. Quick encoding

1) Click “Quick Encoding” to quickly enter song lyrics after having selected a file from the file list.

If there appears a message informing that they have been successfully encoded, click “OK” to finish entering them.



### 20-3. Search & Enter song lyrics

1) Select a file(track/song) from the file list, and then click “Search Song Lyrics”.

2) You can see a search box. Then, enter its singer and title to continue to search.

3) Select one of files(tracks/songs) listed in the left that you want to edit, and then click “Mark Song Lyrics”. Click “Confirm” to finish entering the song lyrics. Click “Exit” to close the search box.



### 20-4. Preview entered song lyrics

1) Select a file(track/song) whose song lyrics have been entered, and then click “Preview”.

If there appears a preview window, click “Play(▶)” to check the song lyrics.



### 20-5. Edit song lyrics

1) Select a file(track/song) whose song lyrics have been entered, and then click “Edit Song Lyrics”.

2) Double-click on the song lyrics displayed. Then, the cursor flickers. At that time, you can edit them.

3) Click “Mark Song Lyrics” on the upper right to finish editing them and then click “Edit Song Lyrics” once again to finish editing them.



### 20-6. Delete entered song lyrics




1) Select a file(song/track) whose song lyrics have been entered and then click “Delete Song Lyrics”. If there pops up a message asking if you would continue to delete them, click “Yes”.



### 3. Photo album

#### 1. Using photo album















- 1) Click “Photo Album” to enter the photo album menu.
- 2) Click “View Folder List Window(  )” to zoom in a folder list.
- 3) Click “View File List Window(  )” to zoom in a file list.
- 4) Click “View All List Windows(  )” to display both the folder list and the file list.


< Tip > . File formats supported: bmp, jpg, jpeg, png

#### 2. Photo album menu screen



-  Battery indicator
-  Exit
-  View folder information
-  View folder information
-  View all lists
-  View file list window
-  Slide show
-  Full screen
-  View cartoon images
-  Align file
-  File information
-  Settings

### 3. View slide show


1) Click “**Slide Show**(


It's developed in the order in which the current files are aligned.



Then, change its repeat and interval time at Settings.


2) Touch the display of the player with the touch pen while executing the slide show, or press a button on the player to close the slide show.

### 4. Full screen mode


1) Click “**Full Screen**(


2) Click “**Backward/Forward**”(when using the joystick, push it to the left/right long, ) to enter the previous/next file.

3) Rotate an image 90° counter-clockwise or clockwise by clicking “**CCW**(Counter Clockwise )/**CW**(Clockwise 

4) Whenever you click “**Zoom-in**(

changed as it is. At that time, you can move it four-ward by clicking the four-ward arrow(when using the joystick, move it four-ward).

5) If you click “**Control Bar**(

6) Close the full screen mode by clicking “**Exit**(


< Tip >

. The control bar will fade out if you don't use it during the menu display time(if you softly touch the display again, or press the joystick, the bar will fade in.).


. If you click “Tab”, the control bar is zoomed out or in twice as large as it is.



(If you click it again, it returns as it is.)


## 5. View cartoon images

1) Click “View Cartoon Images(  )”.



Then, cartoon images will be demonstrated so that it can be fitted in the screen.

2) Whenever you click “Zoom-in(  )” on an image, it is zoomed in 2 times or 4 times as large as it is, or, in turn, changed as it is. At that time, you can move it four-ward by clicking the four-ward arrow(when using the joystick, move it four-ward).

3) Rotate an image 90° counter-clockwise or clockwise by clicking “CCW(Counter Clockwise)  /CW(Clockwise)  ”.

4) Whenever you click “Focus Setting(  )”, the page digit is displayed in the following order:

Upper left → right → center

5) Turn over to the previous/next page by clicking “Previous(  )/Next(  )”(Tab/Enter button).

6) Close “View Cartoon Images” by clicking “Exit(  )”.

< Tip >


. If the menu display time has elapsed or you click “Tab”, the control bar will fade out. And then, if you press the joystick, it will fade in.

. If you click “Enter” after the control bar has faded out, you can turn over to the next page. On the contrary, if you click “Tab”, you can go to the previous page.

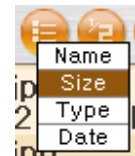
. If you push the joystick upward/downward or to the right/left long, you will face the sides. If you press it short, the focus of the menu bar is changed.

. If you click “Enter” when the control bar hasn’t faded out, you will enter “Zoom-in”.

## 6. Align file


1) Click “Align File(  )” long to display a message window where you can change aligning types.


If you click it short, the aligning type is changed in the order of pop-up windows.




## 7. View file information

1) Click “File Information” to display file information.

 : Shows only the file title.

 : Shows the file title and the date.

## 8. Settings / Help

1) Click “Setting(  )” to enter the Settings mode.

2) Click “Confirm” after having set the player as you please to save the setting.

< Tip >

. If you click “Cancel” or “Exit”, a changed setting isn’t saved.



< Setting >

. Repeat : Set the number as many as which the slide show will be repeated.(On, Off).

. Page Display: Display the total page and the current one when using the slide show.

Image interval time: Set the time cycle by which images in the slide show are changed.

(3sec.~30min., 1hr., 1day)

. Menu display time: Set the time when there appears the control window in the full screen mode and View Cartoon Images.(3sec.~10sec.)

< Help >

If you click “Help( ? )”, you can get a simple help about Photo Album.

### 9. View photo album groups

Photo album is composed of 3 groups. You can jump onto them by pressing “Tab” on the player.

And then you can select an item by clicking an icon with a use of joystick.




If you press the joystick on a selected icon, it’s executed.



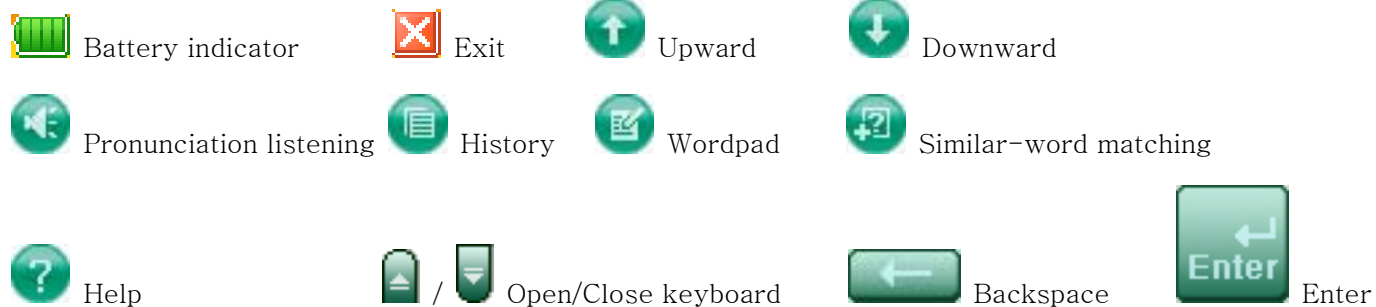
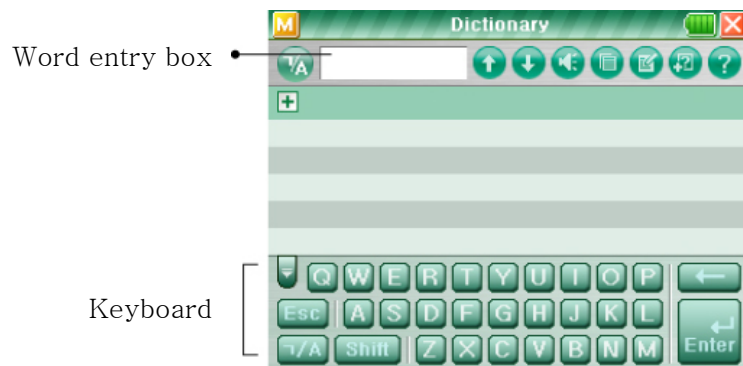
## 4. Dictionary

### 1. Using dictionary



- 1) Click “Dictionary” to enter the dictionary menu.
- 2) And then click “Open Keyboard(  )” on the lower left to open the keyboard.
- 3) Click the touch pen on the keyboard to enter an applicable word, which is demonstrated in the entry box.
- 4) Click “Enter(  )” to search the word. If there is no one corresponding to it, the word you have last searched will be shown.
- 5) Click “Exit(  )” to close the dictionary. If there appears a message asking if you would continue to close it, click “Yes”.

### 2. Dictionary menu screen





### 3. Open word pad



1) Check in a word you searched to display a message asking if you will add it to the word pad.


Then, click “Yes” for its addition.

2) If you click “**Word pad**()”, you can see on the left window a list of words you have added to the word pad, and their detailed explanations on the right window.


3) Select one of the words shown on the left window and then click “**Delete**()”.


It'll be deleted from the word pad.

4) Select all words on the left window and click “**Delete All**()”.

5) Click “**Word pad**()” once more to close the word pad.


### 4. View words that you have searched(History)

1) If you click “**History**()”, you can see on the left window a list of words you have searched, and their detailed explanations on the right window.

2) Select one of the words shown on the left window and then click “**Delete**()”.

It'll be deleted from the History.


3) Select all words on the left window and click “**Delete All**()”.

4) Click “**History**()” once more to close it.


< Tip >

. You can save up to 100 words in the History mode.

## 5. Pronunciation listening

- 1) If you click “**Speaker**()” after having searched a word, you can hear how it’s pronounced.
- 2) Adjust the volume when the word is pronounced by using volume button on the player.

## 6. Similar-word matching

- 1) Whenever you spell in the entry box after clicking “**Similar-word Matching**()”, you can see words similar to the one you want to search for.

## 7. View dictionary groups

Dictionary is composed of 4 groups. You can jump onto them by pressing “Tab” on the player. And then you can select an item by clicking an icon with a use of joystick. If you press the joystick on a selected icon, it’s executed.



## 5. Game



- 1) Click “Game” to enter the game menu.
- 2) Click “Execute File” after selecting a game in “My Game”.
- 3) The game you have selected is executed.

## 6. File Manager

### 1. Start / Close file manager



- 1) Click “File Manger” to enter the file manager menu.
- 2) If you click “Exit”, there will appear a message asking if you would continue to close it. Then, click “Yes” for its close.

### 2. File manager menu screen

Folder list window

File list window

Battery indicator

Exit

View folder information

View folder list window

View all list windows

View file list window




Execute file

Delete file


File aligning type

File information


### 3. Zoom in window

- 1) Click “View Folder List Window(  )” to zoom in the folder list window.
- 2) Click “View File List Window(  )” to zoom in the file list window.
- 3) If you click “View All List Windows(  )”, you can see both the folder list window and the file list window.


### 4. Execute selected file

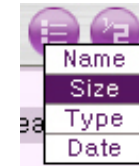
- 1) Select from the file list window a file you want to execute.
- 2) Click “Execute File(  )” to enter an applicable menu.

### 5. Delete file



- 1) Select from the file list window a file you want to delete.
- 2) Click “Delete(  )”. If there appears a message asking if you would continue to delete, Click “Yes”.

### 6. Align file

- 1) If you click “Align File(  )” long, there will appear a pop-up window where you can change aligning types.  
Click it short. Then, the aligning type is changed in the order of pop-up windows.




### 7. View file information

- 1) Click “File Information” to display file information.  
 : Shows only the file title.  
 : Shows the file title and the date.

## 7. E-Book

### 1. Start / Close E-Book

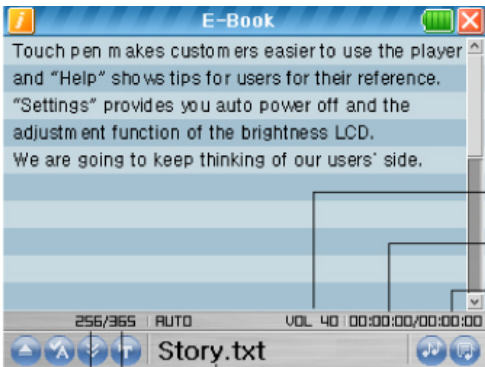


- 1) Click “>>” on the main screen to enter its submenu. And then click “E-Book” to enter the e-book menu.
- 2) The E-Book will be executed as a document file is opened.
- 3) If you click “Exit(  )”, there will appear a message asking if you would continue to close E-Book. Click “Yes” for its close.

< Tip >

- . The size of a document is limited to 2MB.
- . The only file format available to the player is “.txt”(a document with “.doc.” file format isn’t supported).

### 2. Menu screen



The screenshot shows the E-Book application window titled "E-Book". The main content area is a text viewer displaying a paragraph of text. Below the text viewer is a control bar with several icons and indicators. The text viewer is labeled "Text viewer". The control bar includes a battery indicator, a volume indicator, an elapsed time display, and a total time display. The current page and total page are also indicated. The file name "Story.txt" is shown at the bottom of the control bar. The control bar also contains several navigation and function icons: a left arrow, a right arrow, an up arrow, a down arrow, a red square with a white X (Exit), a blue circle with a white up arrow (Open file), a blue circle with a white 'A' (Bookmark), a blue circle with a white down arrow (Start/Stop auto scroll), a blue circle with a white 'T' (Settings), a blue circle with a white musical note (Music On/Off), and a blue circle with a white speech bubble (Open music list).

Text viewer

Volume indicator

Elapsed time

Total time

Current page

Total page

File name

Battery indicator

Exit

Open file

Bookmark



Start/Stop auto scroll

Settings




Music On/Off

Open music list

### 3. Open text file

- 1) Click “Open(  )” to enter Text File Manager, in which only files the E-Book supports can be opened.
- 2) If you select a folder with text files on the folder list window, the text files will show themselves on the window. You can select one of them.
- 3) Click “Execute File(  )” to execute a selected file.
- 4) You can turn over to the previous/next page not only by pushing the joystick upward/downward or using a scroll bar, but also by touching a point above/below the horizontal line drawn from the screen center.


### 4. View text while listening to music

- 1) Click “Open Music List(  )” to display Audio File Manager.
- 2) Select a play list file(pls) saved in My Audio Folder.
- 3) If you click “Execute File(  )”, E-Book will be shown as the selected play list file is opened.
- 4) Click “Music On/Off(  )” to play back the selected file(music).
- 5) If you press the joystick while a text is being read, the music will be played back or put to pause.
- 6) If you push the joystick to the left/right while a text is being read, the player turns over to the previous/next music. On the other hand, if you push the joystick to the left/right, it fast-rewinds/fast-forwards.

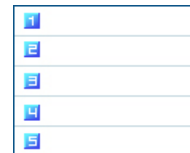
< Tip >

. Music files you can enjoy come from saved play list files. That is, you can hear a play list file which has been created by clicking “Save List” in the audio player mode.


### 5. Bookmark setting

- 1) If you click “Bookmark(  )” long, there will appear a message asking if you would continue to set the bookmark. Then, click “Yes” to continue.
- 2) Click a bookmark number you want to encode if there appears a bookmark list window.


< Tip >. You can encode up to 5 bookmarks.



## 6. Bookmark scanning

- 1) If you click “**Bookmark**()” short, there will appear a bookmark list window. Then, click a bookmark number you want to encode.
- 2) You will turn over to the page on which you have encoded the bookmark.

## 7. Settings / Help

- 1) Click “**Settings**()” to enter the Settings mode.
- 2) Click “Confirm” after having set the player as you please, and the setting will be saved.

< Tip >

. If you click “Cancel” or “Exit”, a changed setting isn’t saved.

< E-Book setting >



- . Auto scroll: Set the time when texts are scrolled in the unit of their pages by clicking “AutoScroll” (Off, 5~50sec., 1min.)
- . Font color: Set the font colors of a text(black, violet, deep blue, purple, gray, green, orange, white).
- . Information font color: Set the font colors of default settings. (black, violet, deep blue, purple, gray, green, orange, white).

. Background color: Select a background color(blue, yellowish green, gray, orange).

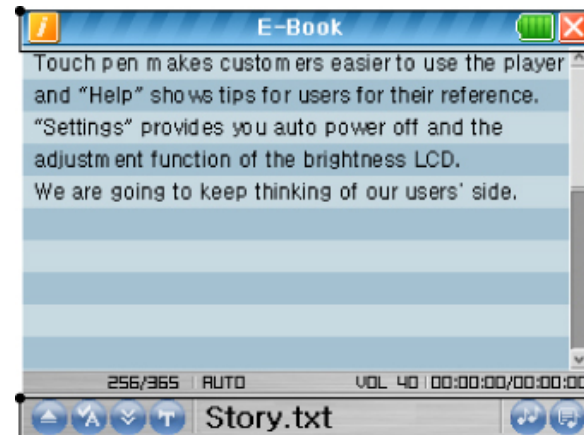
< Help >

If you click “Help( ? )” to get a simple help about E-Book.

### 8. View E-Book groups

E-Book is composed of 2 groups. You can jump onto them by pressing “Tab” on the player.

And then you can select an item by clicking an icon with a use of joystick. If you press the joystick on a selected icon, it's executed.



## 8. FM Radio

### 1. Start / Stop radio



- 1) Click “>>” on the main screen. And then click “FM Radio”.
- 2) Along with a pop-up window informing that the FM radio starts, you can listen to the radio.
- 3) Click “Exit” and then “Yes” to close the radio.

< Tip >

. In the FM radio mode, earphones function as an antenna.

Irrespective of whether you hear through earphones or a speaker, they have to be connected to the player so that you could listen to the radio. If they aren't, there will appear a pop-up window informing that you should connect them to the player.



### 2. Menu screen

The screenshot shows the FM Radio interface with the following labels and components:



- Channel page:** Points to the top section showing preset frequencies: FM 2, 100.79, 103.25, 107.5.
- Frequency:** Points to the large digital display showing 100.79 MHz.
- Recording time:** Points to the bottom status bar showing 00:00:00.
- Recording file:** Points to the bottom status bar showing FM\_107.7\_001.mp3.
- Battery indicator:** A green battery icon in the top right corner.
- Exit:** A red square button with a white 'X' icon.
- Decrease frequency:** A blue square button with a left-pointing arrow.
- Increase frequency:** A blue square button with a right-pointing arrow.
- Preset Setting:** A blue square button labeled 'preset'.
- Channel Auto Scan:** A blue square button labeled 'scan'.
- Add Channel:** A blue square button with a plus sign and a radio icon.
- Delete Channel:** A blue square button with a minus sign and a radio icon.



### 3. Manual channel-setting

1) Increase/decrease frequency by clicking “**Increase/Decrease Frequency**(  /  )”

(When using the joystick, push it upward/downward.).


2) Pick up a channel with the next lower/higher frequency by clicking “**Increase/Decrease Frequency**(  /  )” **long** and then releasing it

(When using the joystick, push it upward/downward long.).

### 4. Channel Auto Scan

1) Click “**SCAN**(  )”.

Then, a channel with the nearest frequency is automatically scanned up along with a passage “AUTO SCAN” on the display. At that time, the “SCAN” icon is changed to “STOP”.

2) Channels available to you are sequentially remembered and saved to channel windows, when the previously-saved channels have been replaced by them. If you want to stop auto-scanning halfway, click “**STOP**(  )”.

3) Channels with higher sensitivity can be stored when they’re auto-scanned.

4) Pick up a channel among the ones saved to the channel page

< Tip >

. You can save up to 16 channels to the channel windows which are composed of two windows.


If you click a channel page window, you can turn over to the other channel page window.


If a channel which has been successfully scanned up can’t be recognized later(or at present) by the player, you’re in position to listen to the broadcast of the previous channel.



### 5. Add / Delete channel



1) Scan up to a channel you want to add to a channel page in which there remains a vacancy yet to be occupied,

and then click “Add Channel( )”. It will be stored to fill the vacancy in.

2) Pick up a channel saved to a channel page, and then click “Delete Channel( )”.  
it will be deleted from the page.

## 6. Using PRESET

1) Click “PRESET( )” to display a word “PRESET”. And then you turn over to the preset mode.


2) If you click “Decrease/Increase Frequency( /  )” when the player is set to the preset mode,  
you turn over to the previous/next channel saved to the channel page.

< Tip >

. If there is no vacancy on the channel pages to save to when you click  
“Add Channel” to add a channel, there will appear a pop-up window informing  
that they are full. To continue to add it, delete one channel that pages.

. You can turn over to the preset mode only if more than a channel has been saved to the channel pages.  
If not so, you can't.

## 7. Mute


1) Click “Mute( )” while listening to the radio to sound off the player. If you click it again, you can hear.

## 8. Speaker to Earphone

1) Click “Earphone to Speaker( )” while listening to the radio.

Then, an output unit(earphone(s)/speaker) through which you could hear is changed to the  
other(speaker/earphone(s)).

## 9. Record Radio

1) Click “Record( )” after having scanned up to a channel whose broadcast you want to record.

2) Then, there will appear a message asking if you would continue to record it. Click “Yes”.

At that time, the “Record” icon is changed to “Stop”.


You can see its recording time and file name on the lower display.

3) Click “Stop(  )” to stop recording.

< Tip >

- . Recording files are saved in such order as starts from FM\_Channel\_000.MP3.
- . The recording files whose format is MP3 are saved at the “My Recordings” folder.
- . You can play them back by using the record menu.

## 10. Settings / Help

1) Click “Setting(  )” to enter the Settings mode.

2) Click “Confirm” after having set the player as you please, and the setting will be saved.

< Tip >

. If you click “Cancel” or “Exit”, a changed setting isn’t saved.

### < Radio Setting >



. Radio reception zone: Set radio reception zone(the USA/Asia, Japan, Europe)

. Auto scan sensitivity: Set a degree of sensitivity to which the player can react(Strong, Medium, Low).

For example, if you set it to High, it will pick up very strong signals alone.

. Power save setting: Set the time when the display gets automatically turned off to save power(10sec., 30sec., 1min., Off)

. Sleep Timer setting: Set the time when the player gets automatically turned off(30min., 1hr., 2hrs, Off)

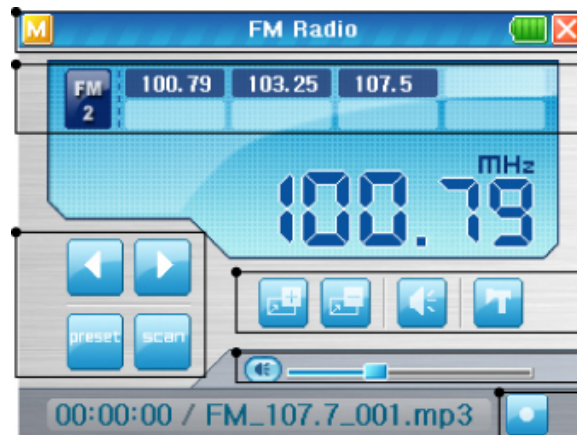
### < Help >

If you click “Help( ? )”, you can get a simple help about FM Radio.

### 11. View FM Radio Groups

FM Radio is composed of 6 groups. You can jump onto them by pressing “Tab” on the player.

And then you can select an item by clicking an icon with a use of joystick. If you press the joystick on a selected icon, it's executed.




## 9. Painter

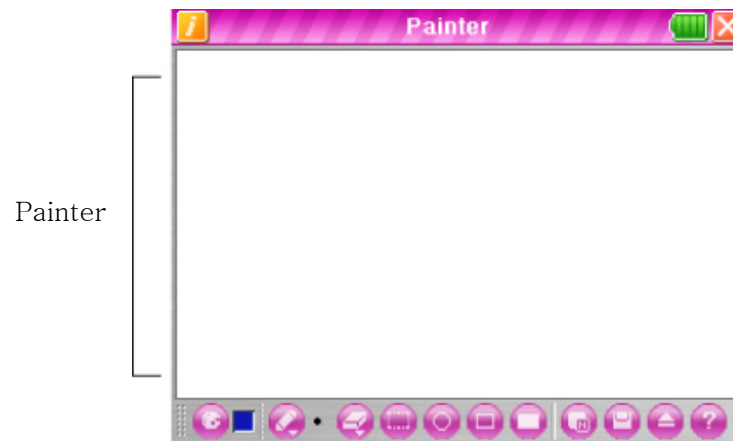
### 1. Start / Stop Painter



1) Click “>>” on the main screen to enter its submenu. And then click “Painter” to enter the Painter menu.

2) Click “Exit()” and then “Yes” to close “Painter”.

### 2. Menu screen



 Battery indicator

 Exit

 Color board

 Pen

 Eraser

 Select Tool

 Circle

 Quadrilateral

 Fill in




 Open New File

 Save

 Open File

 Help

### 3. Drawing





- 1) Click “Color Board()” to select a color you want to. And then if you click “Color Pen” short, you can see 36 colors. Select one of them.
- 2) Click “Pen()” to select the thickness of a line. You can also click “Circle” or “Quadrilateral” to draw a diagram.
- 3) Click “Eraser()” to select it. You can drag it on the display with the touch pen to delete a part of the drawing.



: Deletes the drawing so thickly as a selected pen is thick.



: Deletes the whole drawing

- 4) Click “Select Tool()” to select an area. You can locate the selected area at a place at which you want to.
- 5) Click “Circle()” or “Quadrilateral” after having determined what kind of diagram you would draw.
- 6) Click “Fill In()” to draw a circle or quadrilateral filled in with a color.  
You can draw a diagram not filled in with a color without checking the icon of “Fill In()”.



### 4. Save Drawing

- 1) Click “Save()” to save a drawing.

< Tip >

- . Drawing files are saved in such order as starts from “Painter\_001.bmp”.
- . The drawing file format is “bmp”, and saved at the “My Drawings” folder.

### 5. Open file


- 1) Click “Open File()” to display “Painter File Manager”.
- 2) Select a drawing file from the file list window.
- 3) Click “Execute File()” to execute it.

## 6. Open New File

1) Click “Open New File(  )” to open a new painter.

If there pops up a message asking if you would continue to save the files you have worked on, click “Yes” or “No”.

## 7. Help

Click “Help(  )” to get a simple help about Painter.

# 10. Recording

## 1. Start / Stop recording

1) Click “>>” on the main screen to enter its submenu. And then click “Record”.

2) Click “Exit(  )” and then “Yes” to close the recording.



## 2. Menu screen



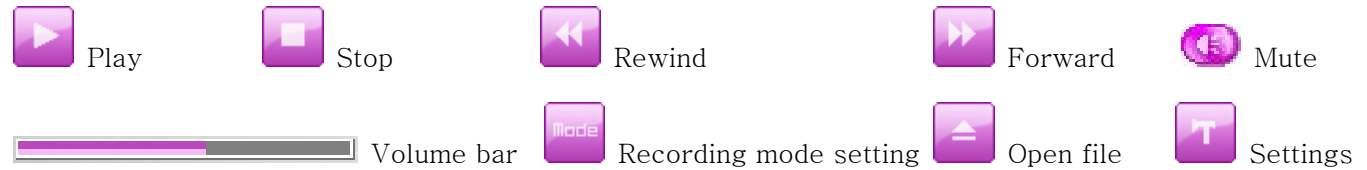
 Battery indicator

 Exit




 Record

 Stop recording

 Delete file









### 3. Record

- 1) Click “**Record**()” to start recording. At that time, the “Record” icon is put to “Pause”.
- You can see on the control window how much time has passed or is left since that recording.
- 2) If you want to put the recording to pause, click “**Pause**()” on the control window.
- If you click it again, the recording restarts.
- 3) Click “**Stop**()” to stop recording.

< Tip >

- . Recording files are saved in such order as starts from “voice\_rec0.mp3”.
- . Recording files are saved at the “My Recordings” folder.
- . The recording file format is MP3.
- . Because an effective distance for the recording is as near as 30cm, you can’t record neither a lecture nor conversations at a meeting.


### 4. Open / Play recording files

- 1) Click “**Open File**()” to demonstrate Voice Recorder File Manager.
- 2) Click the “My Recordings” folder on the folder list window, and then select a file from the file list window.
- 3) Click “**Execute File**()” to open the file. And then click “Play( )” to play it back.
- 4) If you click “**Pause**()” during the playback, it’s put to pause. At that time, if you click “Play”, it restarts.
- 5) Rewind/forward by clicking “**Rewind/Forward**( / )” short during the playback.
- 6) Click “**Stop**()” to put the recording file to stop.

## 5. Recording mode setting

- 1) Select a bit rate for the recording by clicking “Mode(  )”. For example, SP supports its bit rate based on 32kbps(LP < SP < HQ)


## 6. Mute

- 1) Click “Mute(  )” while playing the recording files to sound off the player. If you click it again, you can hear.

## 7. Volume

- 1) Adjust the volume by pressing an applicable point of the volume bar or using the volume button on the player.

## 8. Settings / Help

- 1) Click “Setting(  )” to enter the Settings mode.
- 2) Click “Confirm” after having set the player as you please, and the setting will be saved.

< Tip >

. If you click “Cancel” or “Exit”, a changed setting isn't saved.

< Setting >



- . Recording Sensitivity: Set sensitivity of the microphone during the recording(LO-lower sensitivity, HI-higher sensitivity)
- . VOR setting: If the player has been set to VOR ON during the recording, it intelligently recognizes a voice so that its recording could be put to pause when it can recognize no voice(ON, Off).
- . Maximum Rec Time: Set the maximum recording time(Off, 1hr., 3hrs., 5hrs., 1day).
- . FN Reset: Reset recording files so that they can start from “voice\_rec0.mp3”.

< Help >

Click “Help( ? )” to get a simple help about Recording.

**9. View recording groups**

Recording is composed of 4 groups. You can jump onto them by pressing “Tab” on the player.

And then you can select an item by clicking an with a use of joystick. If you press the joystick on a selected icon, it’s executed.




**11. Calculator**

**1. Using calculator**

- 1) Click “>>” on the main screen to enter its submenu. And then click “Calculator” to enter the calculator menu.



- 2) Manipulate “Calculator” in the same way as you use a general calculator.  
Use the touch pen when manipulating it.
- 3) Click “Exit()” and then “Yes” to close the calculator.

## 2. Engineering calculator

- 1) Using ( )

The function of ( ) is used to prioritize four fundamental operations.  
(addition, subtraction, multiplication, division).

You can omit the multiplication sign when doing multiplication.

Ex)  $9*(2+3) \rightarrow 9(2+3)$

- 2) Engineering notation (+ )/(-)

You can use a general notation up to such digits as amount to  $10^8$ .

When notating digits with more than  $10^9$ , you can use the engineering notation.

Ex) When notating “ $10^{10}$ ”, it’s displayed as “1.0e10”.

- 3) Negative number notation

The subtraction sign(-) is notated in the same way as the negative sign(-). Accordingly, if you want to separately notate the latter, use parentheses “( )”.

Ex) When subtracting -1 from 10, you can notate it as follows:  $10-(-)1$

- 4) Using trigonometrical function(sin, cos, tan)

The unit of angle and the symbol used when you’re working on trigonometrical function is “degree” and “°”, respectively.

Just as you can omit the multiplication sign when doing multiplication, as you can do so when working on trigonometrical function.

Ex) The value of the sine of  $45^\circ$  can be notated as “sin45”.

5) Using exponential function(ln, log)

“ln” refers to natural logarithms having “e” as a base, while “log” means common logarithms with “10” as their base. Just as you can omit the multiplication sign when doing multiplication, as you can do so when working on exponential function. Ex)  $4 \cdot \log 2 \rightarrow 4\log 2$

6) Pause “,” used whenever the integer turns over to the next 3 digits

You can see the pause “,” used whenever the integral numbers turn over to the next 3 digits for their readability.

Ex) “1234.567” is displayed as “1,234.567”.

※ You can change the rule by which the pause “,” is dotted in Settings

7) Memory function

MC: Rest memory.

MR: Enter into the entry box the number stored in the current calculation memory.

MS: Save only numbers entered into the current entry box. However, what contains numerical formulas or operators can't be saved.

(Erroneous Example)  $2 + 3$ (erroneous in that a operator “(+)” is included),


(2,2)(erroneous in that parentheses “( )” are included)

(Correct Example) -1.234, 1.234

< Tip >

You must select the engineering calculator type before using the an engineering calculator,

### 3. Settings / Help

1) Click “Setting(

2) Click “Confirm” after having set the player as you please, and the setting will be saved.

< Tip >

. Click “Cancel” or “Exit” to save a changed setting.

< Calculator setting >




- . Calculator type: Select a calculator type(engineering, general).
- . Pause setting: Change the rule by which the pause “,” is dotted in Settings(Off, 1,000, 1,0000).

## 12. Settings & Help

### 1. Start / Close Settings



- 1) Click “>>” on the main screen to enter its submenu. And then click “Settings”.
- 2) Click “Confirm” to save setting after having worked on the setting.
- 3) Click “Exit(  )” and then “Yes” to close Settings.  
Click “Cancel” or “Exit” to save a changed setting.

< Tip >

- . If you click “Cancel” or “Exit”, there appears a message informing the current work will be closed. Then, if you click “Yes”, a changed setting isn’t saved.

## 2. Settings & Help

### < Power/LED >



. Auto Power Off: Set the time when the player gets automatically turned off(Off, 10min., 30min., 1hr.).

. Power saving: Set the time when the display is turned off(Off, 10sec., 30sec., 1min.)

Provided that, the power save function isn't supported in the audio player/video player/FM Radio mode.

. Key LED: Set the time the joystick LED is turned off(Off, 3sec., 5sec., 10sec.).

. R.C. LED: Set the time the remote control LED is turned off(3sec., 5sec., 10sec.).

< A/V >



. LCD Brightness: Lighten or darken the LCD.

. TV Types: Change a TV type(NTSC, PAL).

. LCD Diversion: Set the player so that, when you play back the player while connecting it to the TV, the TV is turned off for a moment with the display of the player on(Off, 3sec., 5sec., 10sec.)

※You can't simultaneously hear from the TV and the player.

. AC3 Setting: Set how the audio files with AC3 formats are output(2 channel, 5.1 channel).

. EQ mode: Change EQ mode(Normal, Rock, Jazz, Classic, Pop).

### < Other >



- . Booting Image: Change a start image(basic, user-defined)
- . Main UI: Change a main screen(total function mode, car theater mode)
- . Language: Select language(Korean, ...)
- . USB Update: Get USB chip updated(refer the Page 30).

### < Set start image >

- 1) Change a start image by using “User-defined” in Other Settings.
- 2) After having secured an image file with 320x240 in size you want to set as a new start image, change its name to “start.jpg”. And then create a folder in the name of “image” under the player drive.
- 3) Paste the “start.jpg” image to the “image” folder. You must not disconnect the player immediately after having pasted it. It may not have been successfully pasted. If you re-boot the player, you can see that the image has been set as a start image.

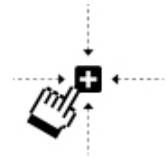
### < Calibration >

If the place you touch on is different from the one the player recognizes, the calibrations will be reset.

- 1) Select “Other” at Settings.
- 2) Click “Set Calibrations” to enter the calibration screen.

3) Move “+” by clicking “+”.

If the “+” icon is located at the center, click it long to close the calibrations.



The wired remote control is optional.

## 13. Wired Remote Control

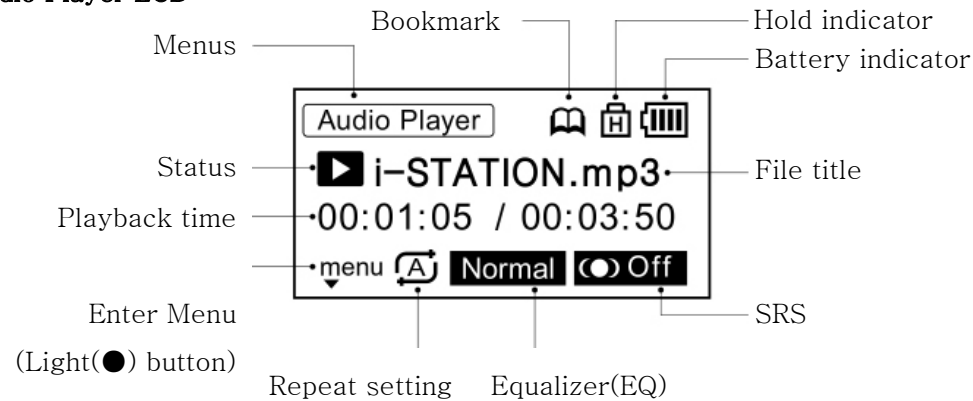
### 1. Power On / Off

1) Push the power switch on the player to the left for over 2 seconds to turn it on.

(the wired remote control can't be used to turn it on.).

2) Turn the player off by pushing the power switch on the wired remote control to the left for over 2 seconds.

### 2. Audio Player LCD



### 3. Play

1) Enter the audio player menu by pushing the joystick to the left/right in the main screen mode and then pressing it.

2) Press the joystick in the audio player menu mode to play back a track.



#### 4. Pause / Stop

- 1) Put the player to pause by pressing the joystick short during the playback.
- 2) Transfer to the previous/next track by pushing the joystick upward or downward while the player is put to pause.

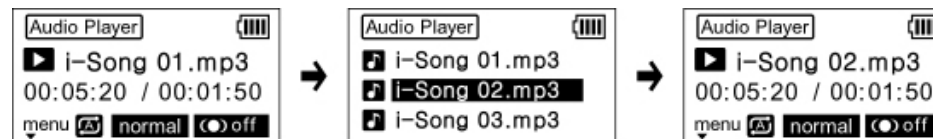


#### 5. Rewind / Forward



- 1) Transfer to the previous/next track by pushing the joystick upward or downward during the playback.
- 2) If you push the joystick to the left/right short during the playback, the player rewinds/forwards by 5 seconds.
- 3) If you push the joystick to the left/right short during the playback, the player fast-rewinds/fast-forwards.

#### 6. Search tracks on the play list

- 1) Push the joystick upward long to display a play list.  
(Press the light(☼) button long to go back to the previous screen.)
- 2) Push the joystick upward or downward short and then press it on a track you want to play.  
The selected track will be played back.


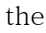


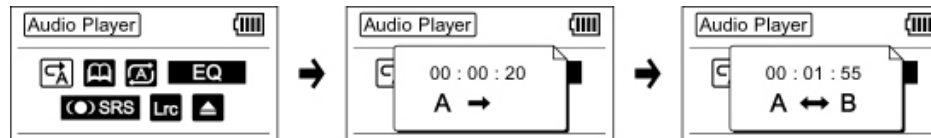
## 7. Open function-switching menu

- . Click the light() button long to enter the function-switching menu.
- . Transfer to a menu by pushing the joystick upward/downward, or to the left/right.
- . Press the joystick to select the menu.
- . If you press the light() button long anytime in the function-switching menu mode, the current setting isn't saved(You can go back to the previous menu by pressing the button short.).





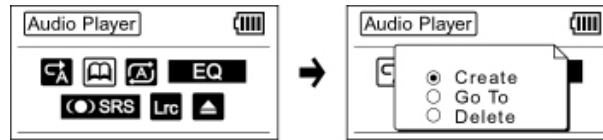
## 8. A-B Repeat

- 1) Click the light() button while playing back long to enter the setting menu.
- 2) Manipulate the joystick to enter “A-B Repeat()”. And then press the joystick to set A-B Repeat(A). At that time, you can see “A→” on a pop-up window.
- 3) Press the joystick at the place where you want to set A-B Repeat(B). And then execute A-B Repeat. At the time you can see “A↔B” on the pop-up window.
- 4) Press the joystick while executing A-B Repeat to release A-B Repeat.



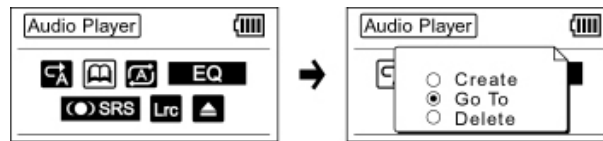
## 9. Bookmark setting

- 1) Click the light() button while playing back long to enter the setting menu.
- 2) Press the joystick short after entering “Bookmark()”. Then, there appears a pop-up window.
- 3) Press the joystick after entering “Create” to save the setting. And then close the pop-up window.



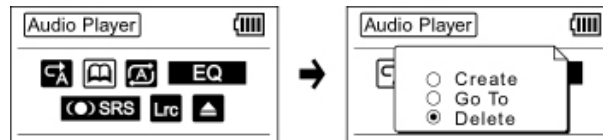
### 10. Execute Bookmark

- 1) Click the light(☼) button while playing back long to enter the setting menu.
- 2) Press the joystick short after entering “Bookmark(📖)”. Then, there appears a pop-up window.
- 3) Press the joystick after entering “Goto” to execute the bookmark.



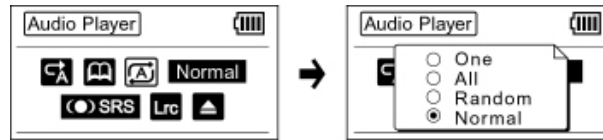
### 11. Release Bookmark

- 1) Click the light(☼) button while playing back long to enter the setting menu.
- 2) Press the joystick short after entering “Bookmark(📖)”. Then, there appears a pop-up window.
- 3) Press the joystick after entering “Delete” to release the bookmark.




### 12. Repeat setting

- 1) Press the light(☼) button during the playback to enter the function-switching menu.
- 2) Press the joystick in the repeat setting mode, there appears a pop-up window through which you can work on the function switching.
- 3) Press the joystick on the mode you want to set to, the current setting is saved. Then, the pop-up window is closed.

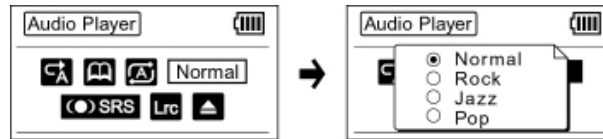


### 13. EQ mode setting


- 1) Press the light() button during the playback to enter the function-switching menu.
- 2) Press the joystick after having entered the EQ mode.

Then, there appears a pop-up window through which you can work on the EQ mode setting.

- 3) Push the joystick on a mode you want to set the player to and then close it.

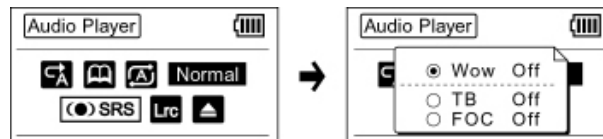


### 14. SRS setting

- 1) Press the light() button during the playback to enter the function-switching menu.
- 2) Press the joystick after having entered the SRS setting.

Then, there appears a pop-up window through which you can work on the SRS setting.

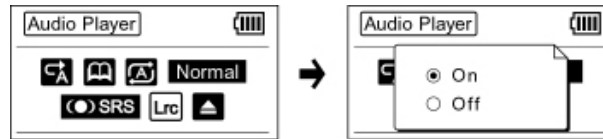
- 3) Push the joystick on a mode you want to set the player to and then close it.



### 15. View song lyrics(Lrc)

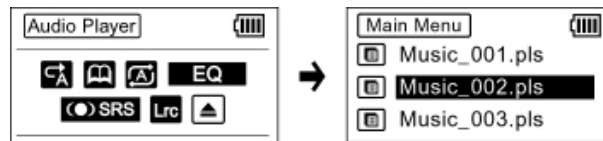
- 1) Press the light(☼) button during the playback to enter the function-switching menu.
- 2) Press the joystick after having entered “Lrc”. Then, there appears a pop-up window. Select “On” to display song lyrics on the display.

(Provided that, only the files that are worked on by the LDB Manager supports this function.).



### 16. Open play list file

- 1) Press the light(☼) button during the playback to enter the function-switching menu.
- 2) Enter “Open Play list(▲)” and then press the joystick.
- 3) Press the joystick on a play list file you want to play back.

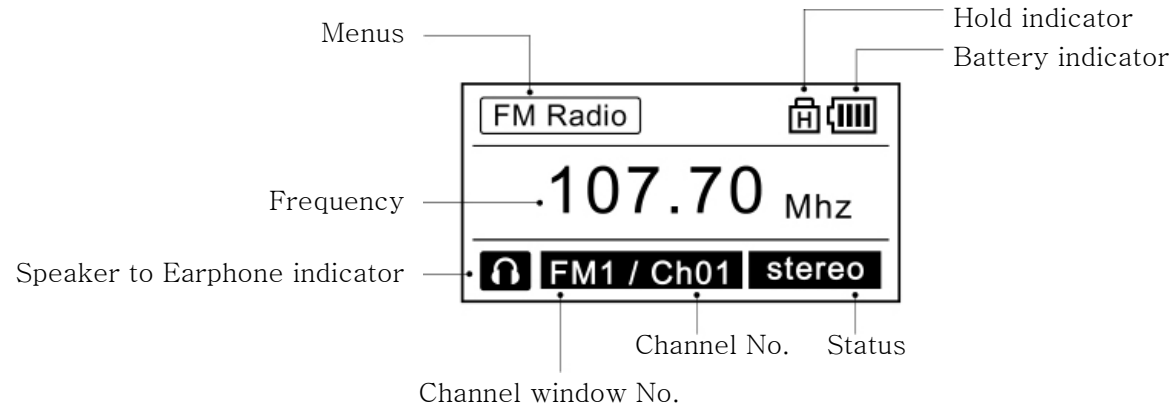


### 17. Exit

- 1) Press the joystick long. Then, there appears a window asking if I would continue to close. Then, click “Yes”.

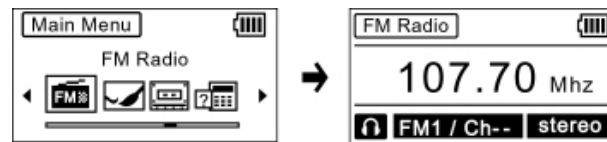


### 18. FM Radio LCD Screen



### 19. Execute FM Radio

- 1) Manipulate the joystick to the left or right in the main screen and then press it to enter the FM radio.
- 2) Budge the joystick to the left or right short to increase/decrease frequency.
- 3) If you release the joystick after budging it to the left or right long, the nearest channel available has been broadcast.



### 20. Channel Auto Scan

- 1) Push upward the joystick long to automatically scan the channel nearest to the one you're listening to. Memorized frequencies are saved onto the FM channel window in their order.
- 2) If you press the joystick while scanning, the scanning-up stops.



## 21. Saving PRESET

- 1) Set the frequency you'd like to listen
- 2) Press and hold the joystick to the bottom on your wire remote control, it goes to "saving mode".
- 3) Make a move to the right or left with the joystick when you want it to be saved on the right place you'd like to. At that time, if you move it to the top and bottom you can move the channel page window.
- 4) Press the joystick if you find a broadcast to save.

## 22. Using PRESET



- 1) Click the joystick short to enter the preset mode.
- 2) Manipulate the joystick to the left or right to select a channel.
- 3) Press the joystick short to get out of the preset mode.



< Tip >

. The preset mode can be used only if there is more than a channel saved.

## 23. Record FM Radio

- 1) Press the light() button long after having scanned up to a channel whose broadcast you want to record.
- 2) Click "Yes" to start recording.
- 3) If you press the light() button long while recording, the recording stops.



< Tip >

- . Recording files are saved in such order as starts from FM\_Channel\_000.MP3.
- . The recording files whose format is MP3 are saved at the “My Recordings” folder.
- . You can play them back by using the record menu.

#### 24. Exit

- 1) Press the joystick long. Then, there appears a window asking if you would continue to close. Then, click “Yes”.



#### 25. Light On

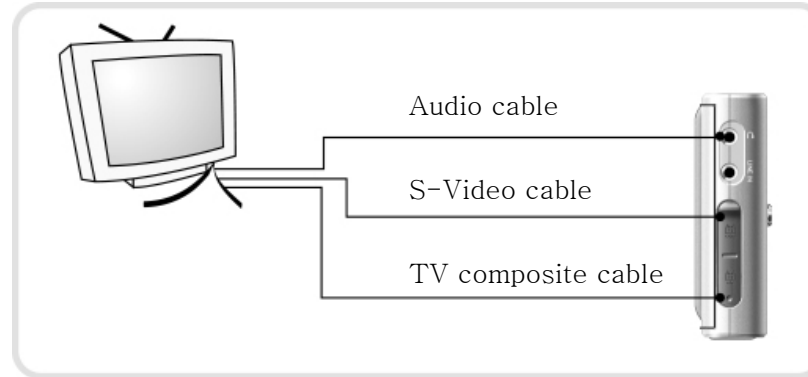
- 1) If you press the light(●) button short, there is LED on the remote control lit up.

## 14. Connecting the Player to the TV

Secure 1) S-Video cable, 2) TV composite cable, and 3) Audio cable when connecting the player to the TV.

### 1. Connecting to the TV

Set the TV channel to Line-in Channel after checking if the TV supports NTSC or PAL.



※ The color of cable jacks which are connected to the TV is as follows:

Audio cable: red, white

S-video cable: black

TV composite cable: yellow, orange

< Tip >

. **Of two cables supporting video(S-Video cable, TV composite cable), you can select one available to the TV.**

. Because the display of the player will be turned off and then you can see only the TV screen, it's recommended that you use the player buttons or the wireless remote control rather than the touch pen.

### 2. Cautions when connecting to the TV

Check the following considerations for any trouble with the TV even after you have connected the player to it.

**Case 1.** The TV channel may not have been properly set.

Tip 1. The player screen is demonstrated only if the TV channel has been set to "Line-in".

**Case 2.** The TV format may have been improperly set.

Tip 2. The player doesn't display images if you have wrongly chosen either of NTSC or PAL.

**Case 3.** A connection cable may have been connected to a wrong jack.

Tip 3. The TV screen isn't demonstrated if a cable is connected to a wrong jack,

**Case 4.** The display of the player may not be demonstrated.

Tip 4. If the player transfers images to the TV so that they can be demonstrated on the TV screen, the display of the player has been engineered to get turned off. In spite of that, if it is still turned on, check if you have connected a cable to a wrong jack.

**Case 5.** Either of the video mode and the audio one on the TV may not be supported.

Tip 5. Video cables(S-Video, TV composite cable): Check if the S-Video jack is connected to the TV Out jack.

Audio cable: Check if it is connected to the earphone jack of the player.

### 3. Zoom In / Out the TV screen

Such functions as "Zoom In", "Zoom Out", or "Caption Layout" can be supported on the condition that the player is being played back after it has been connected to the TV.

1) Click the player tab button(the menu button on the remote control) to enter "Zoom In/Out" menu after having connected it to the TV. The screen will stop and then demonstrate the "Zoom In/Out" menu(whenever you click the tab button, it will sequentially display the following menu: Zoom In/Out > Screen Layout > Caption Layout).



2) You can push the joystick four-ward(the four-ward buttons on the remote control) to zoom in/out the screen.

Left: Symmetrically zoomed out with respect to a vertical line

Right: Zoomed in zoomed out with respect to a vertical line

Upward: Symmetrically zoomed out with respect to a horizontal line

Downward: Symmetrically zoomed in with respect to a horizontal line



3) Push the joystick to finish setting(when using the remote control, push its SEL button).

< Tip >

The screen aspect ratio is limited to a maximum of 640x457 with a minimum of 64x64.



#### 4. TV Screen Layout / Caption Layout

1) Click the player tab button(the menu button on the remote control) to enter “Caption Layout” menu after having connected it to the TV. The screen will stop and then demonstrate the “Caption Layout” menu(whenever you click the tab button, it will sequentially display the following menu: Zoom In/Out > Screen Layout > Caption Layout).



2) You can push the joystick four-ward(the four-ward buttons on the remote control) to change the caption layout.



< Tip >

The caption layout is limited so that it couldn't collide with the control window when moving it upward.

#### 5. Reset

1. Click “Settings(🔧)” at the video player mode for resetting.
2. Click “Reset” to reset all values previously set.

# Miscellaneous

## 1. FAQs

Please check the following considerations or cases before contacting our Customer Service Center for any trouble.

**Case 1.** The player wouldn't be turned on.

Tip 1. Check if its batter has been discharged. If so, recharge it for over 4 hours and then re-try it.

**Case 2.** The joystick and buttons don't work.

Tip 2. Check if the hold key is switched on. If so, switch it off.

**Case 3.** You can't adjust the volume with the Volume buttons.

Tip 3. Check if the hold key is switched on, and then if you can't hear after having connecting an earphone or an external speaker.

**Case 4.** The Touch Pen doesn't work.

Tip 4. Information about its coordinates may have been deleted from the player.

**Case 5.** Video files aren't played back.

Tip 5. Try to play them on the PC first. If you can't still play them back, they may have been damaged.

On the contrary, if they are played back on the PC, check if their file formats and bit rates are what the player can support.

**Case 6.** Video files played back by the player don't forward nor rewind. And still less A-B Repeat.

Tip 6. They may not contain their timing information, in which case they don't work when on the PC, either.

**Case 7.** You can see nothing on the screen when playing back video files, although you can hear from the player.

Tip 7. You can see that symptom when the player synchronizes video timing information while playing it back.

In this case, you'd better try to play them back on the PC. If the same symptom persists, they may belong to what the player doesn't support, or may have been broken.

**Case 8.** The audio player can't play back audio files.

Tip 8. First, check if you can play them back on the PC. If they are normally played, check if their file formats or bit rates are what the player supports. If they are not so, you need to convert it with the converting program(Unfortunately, we don't supply audio codec software; however, you could find out the shareware software on the internet).

**Case 9.** You can't hear from neither a speaker nor an earphone.

Tip 9. Check if the volume has been set to "0". If it isn't, check if the earphones have been unplugged, or if the speaker has been properly connected.

**Case 10.** You can't hear from the FM Radio mode.

Tip 10. Check if earphones that function as an antenna for the player have been unplugged, or if the speaker toggle icon has been switched to the earphone mode.

**Case 11.** You can't demonstrate files in the Photo Album mode.

Tip11. Check if their formats are "jpg" files. If so, check if their sizes are too large to open them.

**Case 12.** You can't enjoy an English native speaker's pronunciation when using the dictionary.

Tip 12. Not all entries of the dictionary are supported for their native speaker's pronunciation.

## 2. Specification

### 1. Basic

- . Size(dimension)/weight: 123.0 x 76.8 x 21.5mm/246g(battery included)
- . Product type: Plug & Play(removable mass storage device)
- . Touch screen: Easy to use/MS windows-like interface
- . USB download: USB 2.0 high speed, 18MByte/sec
- . HDD memory: 20G/30G
- . Battery: Lithium Polymer/2,700mAh
- . Playback time(based on the standard-type battery): Video – 7 hours(resolution: 320X240/30frame),  
Audio – 13 . hours(LCD off)
- . Caption available: SMI/SRT(all kinds of language supported)
- . Operating temperature: 5℃ ~ 45℃

## **2. Video**

- . File formats supported in the video mode: DivX 3.11~5.XX, Xvid, MPEG1/2/4(Provided that, such file formats as ASF or WMV need to be converted with the converting program.)
- . LCD: 3.5", 320x240 pixels, 260,000 colors
- . Frame: 30 frames per second
- . Bit rate: 8Mbps (720x480, 30fps)

## **3. Audio**

- . File formats supported in the audio mode: MP3, WMA, OGG(up to Q10), AC3, AAC
- . Channels: 5.1 channel stereo
- . Frequency bandwidth: 20Hz ~ 20KHz
- . Output: 70mW(35mW + 35mW)
- . Signal to noise ratio: more than 95dB
- . EQ: Normal, Classic, Rock, Jazz, Pop
- . Sound effect: 3D SRS WOW, TruBass, FOCUS
- . Total Harmonic Distortion(THD): <0.1 %

## **4. FM Radio**

- . Frequency bandwidth: 76~108 MHz
- . FM recording file format: MP3, 128kbps
- . Frequency: Auto scan(up to 16 channels supported)/regional frequency bandwidths all over the world can be picked up.

## **5. Dictionary**

- . Type: English-English dictionary
- . Feature: a native speaker's pronunciation enjoyable

## **6. TV out support**

- . Type: NTSC / PAL
- . Form: CVBS / S-Video

## **7. Voice recording**

- . File format: MP3
- . Maximum recording time: 250hrs.(on a basis of 20GB)
- . Bit rate: 128Kbps