

CONTENS

1. Before you begin / 2
2. Getting started / 6
3. Video Player / 14
4. How to use the Audio Player / 22
5. How to use the Photo Album / 30
6. How to use the Dictionary / 34
7. How to use the FM Radio / 37
8. Extra Features / 42
9. Product Information / 47



MULTIMEDIA PLAYER

1. Before you begin

This chapter explains what you have to know before using your PMP.

Thank you for purchasing PMP products from Digital Cube, Inc.

You can enjoy video, audio, pictures and more with your Portable Multimedia Player (PMP).

Please read this user's guide carefully before using your PMP.

The warranty service may be rendered void for any damages or defects caused by the misuse or misunderstanding of this user's guide.

■ Computer requirements

To use your PMP, you need an IBM compatible or Mac PC satisfying the following minimum requirements.

1. CPU: Pentium III 500 MHz or higher, Macintosh iMac G3 or higher
2. OS: Windows 98SE/ME/2000/XP or Mac OS 9.1 or higher
3. Available internet access (high speed broad-band recommended)
4. CD-ROM drive
5. Mouse
6. Color monitor SVGA or higher
7. 128MB or more RAM recommended
8. USB port (USB 2.0 High Speed strongly recommended)

■ Warning

This product is for personal use only. Unauthorized use of illegal contents or duplication of copyrighted materials may infringe upon the rights of the third parties and may be contrary to copyright laws.

■ Cautions

1. Keep your PMP away from direct sunlight, high humidity, water (liquids), and strong electromagnetic fields.
2. Never use your PMP's video player while driving. Even when using the audio player, do not try to use the buttons.
You should only use your PMP when you are NOT driving.

3. The data stored on your PMP may not be safe. Data may be lost or corrupted from physical shock, damage or misuse.

Please save a back-up copy of any important data on a secure storage medium.

Digital Cube is not responsible for loss of data or any damages incurred from lost or corrupt data.

4. Ensure your PMP is never dropped or physically struck.

Do not try to dismantle the player unit. Warranty service may be void for the damages due to physical shock, dropping or dismantling of the unit.

5. Your PMP has a high resolution TFT-LCD with a touch screen.

When using the player, always use the touch pen provided with the player. Do not use any other material for the pointing device.

Your touch screen may be damaged from using the wrong material.

6. Always use soft fabrics to clean the surface of the TFT-LCD, otherwise, your TFT-LCD's touch screen may be scratched or damaged.

■ Cautions when using the battery

1. Your PMP has a high capacity Lithium Polymer battery with 2700mAh at 3.7V. Please always be careful how you treat the battery.

Negligence may create problems such as high heat or fire.

2. Always keep your battery away from high temperatures, chemicals and physical shocks. Do not try to dismantle the battery unit.

3. Always use the player or a certified recharger to recharge the battery. Do not use any other adaptor or recharger.

Otherwise, problems such as overcharging, heat or fire may ensue.

4. When the battery is fully spent, please recharge the battery for at least 1 hour or longer.

Otherwise, the overall lifetime of your battery may be reduced.

■ Check points

Please check the following items before using your PMP.

1. Firmware upgrades are required to improve the functionality of your PMP and to correct any firmware errors.

Your PMP will be more stable and up-to-date with latest firmware upgrade.

2. Please visit www.digital-cube.co.kr or www.i-station.co.kr to check for the latest firmware.

If a more recent firmware upgrade is available, please upgrade the firmware before using your player.

■ LCD Pixel Policy

The LCD screen on your PMP1000 unit has been manufactured to rigorous standards to provide a high quality viewing experience.

Nevertheless, your LCD screen may have slight imperfections. This is not particular to the PMP1000 screen, but to all devices which have LCD screens regardless of the original manufacturer of the LCD. Each product vendor guarantees that his screen will contain no more than a certain number of defective pixels. Each screen pixel contains three dot elements (Red, Blue, and Green).

One or all of the dots in a given pixel may be stuck on or stuck off. A single dot stuck off is the least noticeable.

All three dots of a pixel stuck on is the most noticeable. Digital Cube guarantees that its PMP1000 screen will have no more than 2 defective pixel (regardless if that pixel has one or more defective dots).

This means that during the period of guarantee for your country or jurisdiction, if the screen on your product has three or more defective pixels, Digital Cube will repair or replace your PMP1000 product at its cost. Thus, one or two defective pixel is not grounds for replacement or repair of the product.

■ Package contents



PMP



EARPHONE



POUCH



A/V CABLE



REMOTE CONTROL



S-VIDEO CABLE



USB CABLE



AC ADAPTOR



LINE-IN CABLE

- HAND STRAP, DRIVER CD, SOFTWARE CD, LCD CLEANER, LEAFLET

※ The accessories are subject to be changed for quality improvement without notice.

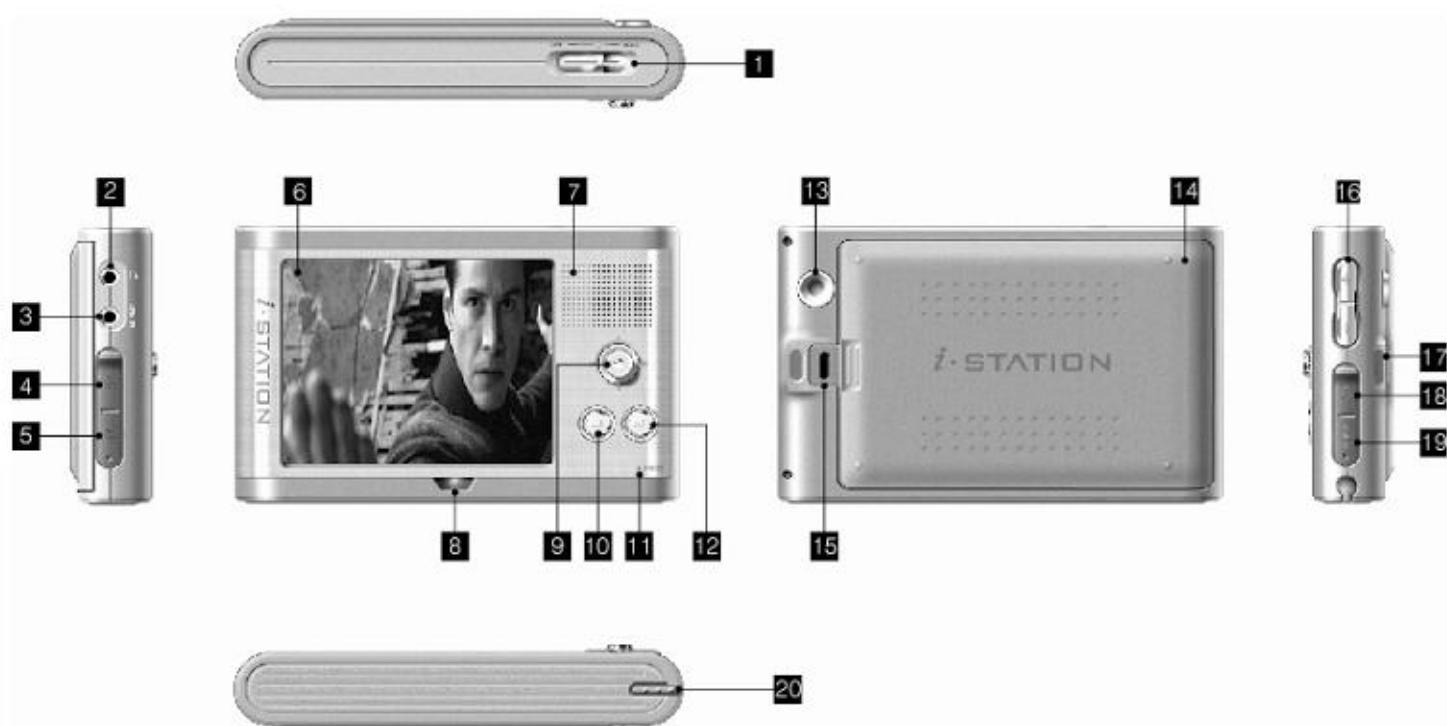


MULTIMEDIA PLAYER

2. Getting started

This chapter explains the basics of your PMP.

■ Overview of your PMP



1. Power, hold switch : Use this switch to turn your PMP on or off, or to turn on the hold function.
2. Earphone jack : Connect earphones using this jack. You can use any earphones with a standard 3.5mm jack.
3. Audio-in jack : Through this jack, you can connect audio devices to record MP3 files.
4. S-Video out jack : Use this jack to connect to a TV. If your TV supports S-Video, then always connect it with S-Video out as it provides better video quality than Video out.
5. Video out jack : Use this jack to connect to a TV. Use this jack only when S-Video is not available.
6. TFT-LCD : Use the TFT-LCD to operate your PMP. You can have full control of your player using the touch screen.
7. Speaker : Audio output is automatically switched to the speaker when the earphones are disconnected.

8. Infrared sensor, LED: The LED displays the player status especially when the TFT-LCD turned off.

When using the remote control, point it to the IR sensor located here

9. Joystick : You can move the joystick up/down/left/right or press it in. Use the joystick when not using the touch pen.

10. Tab button: Press this button when you move the icon focus without touch pen. It works in the same way as the TAB key on MS Windows.

11. Microphone : Used for voice recording.

12. Enter button : Press this button to execute the selected function. Use this only when not using the touch pen.

13. Stand hole : You can stand your PMP on an angle by putting the touch pen in this hole.

You can adjust the angle by changing the length of the touch pen.

14. Battery: This is the detachable Lithium Polymer battery.

15. Battery release button: You can release the battery by pressing this button.

16. Volume buttons: Use these buttons to control volume. "+" for louder and "-" for quieter.

17. Hand strap ring: Use this ring to attach the hand strap.

18. USB jack: Use this jack to connect to PC with USB cable.

19. DC adaptor jack: Connect the AC power adaptor here for recharging or using your PMP.

20. Touch pen: Use this pen when you operate your PMP using the touch screen.

■ Using the touch pen

A. Using the touch screen

1. Draw out the touch pen. Extend the length of the pen for easier use.

2. Click: Using the touch pen, press the icon gently and softly on the screen.

Do not apply strong or hard force when you touch the screen.

3. Drag: Press and hold the icon on the screen using the touch pen, then release the touch pen on the place you want. This functions similarly to a mouse drag on MS windows.



B. Standing your PMP on an angle

1. Draw out your touch pen.

2. Extend the length of the pen as much as you need.
3. Put the touch pen into the standing hole (you can control the angle by changing the length of the pen).



■ How to use the buttons and joystick

You can operate your PMP using the buttons and joystick without the touch pen. However, using the touch pen is highly recommended since it is more convenient. Just in case the touch pen is not available, please become familiar with using the buttons and joystick.

A. Volume control

1. You can control the volume of the audio output using the volume switches.
2. Press the “+” button for louder volume and the “-” button for quieter volume.

B. Joystick

1. Joystick - 4-directions : you can move the joystick up, down, left and right. Usually it is used for changing selections.
Usage may differ from screen to screen. Please refer to the chapters describing those screens in detail for more information.
2. Joystick - pressing in : You can also press the joystick in. It is usually used to activate the selection, however, usage may differ from screen to screen.



left/right/up/down : Move the joystick to each direction
press : Press the joystick in to activate the selection

C. TAB/Enter button

1. TAB button : You can move the focus of the icons by pressing this button.

It works in the same way as the TAB key on a keyboard for MS Windows.

2. Enter button : After you have focused an icon, you can activate the function of that icon by pressing this button.

It works similarly to the Enter key on a keyboard for MS Windows.



TAB button : Move the focus on icons and menu items



Enter button : Activate the icons and menu items after they are focused

Terminology in this user's guide

“SELECT” : in this manual, “SELECT” refers to when you activate an icon or a menu item by pressing the joystick in after you have focused an item with the joystick (up/down/left/right).

“EXECUTE” – “EXECUTE” refers to when you activate the function by pressing the Enter key after you focus the icon or menu item with the TAB button.

■ Connecting your PMP with a PC

Connect your PMP to a PC using a USB cable. (Some PCs have a USB port on the front side.)

The USB connection message will appear on the PMP LCD.



Warning!

● Do not apply a strong force to the USB connector. Do not shake USB connector especially when it is connected.

■ Installing the USB driver for Windows 98SE

You need to install the device driver to use your PMP when using Windows 98SE. Other OSes do not require this driver installation.

1. Place the provided driver CD in your CD-ROM drive.
2. Connect your PMP to your PC using the USB cable.
3. Follow these instructions as below.

[Under]

- 1) If Windows is properly installed, you will see the following screen. Click "Next".
 - 2) Select the 'Display a list of all the drivers' option and then click the 'Next' button.
 - 3) Select 'Universal Series Bus Controllers' and then click the 'Next' button.
 - 4) Click the 'Have Disk' button.
 - 5) Click the 'Browse' button in the 'Install From Disk' screen.
 - 6) Locate the Win98Drv folder in the provided CD. Select the PMP1000.inf file and click "Next" to continue.
 - 7) Screen shot after correct device information found. Click 'Next'.
 - 8) Screen shot after the correct location of the USB driver found. Click 'Next'.
 - 9) Click 'Finish' to finish the installation process.
4. After installation, you should be able to see the removable disk(PMP1000) with Explorer or similar software.
The letter for the drive (D:, E:, F:, etc.) may differ for each PC.

■ For other OSes,

OSes other than Windows 98SE do not require device driver installation.

Your PC will recognize your PMP automatically when you connected using the USB cable.

When you connect for the first time, it may take a couple of minutes to recognize it. From the second connection, it will be instantly recognized.

■ Check the connection

You can confirm the correct USB connection by referring to the following screen shot.

■ File transfer / store / remove

1. Connect your PMP to a PC using the USB cable.
2. Run file explorer or similar software.
3. Select the folder(s) or file(s) you want to transfer.
4. Click the right mouse button and select the “Copy” command. You can also select the “Cut” command for file moving.
5. Select the folder you want to copy the files into.
6. Press the right mouse button.
7. Apply the “Paste” command.
8. You can apply the “Delete” command to delete the selected file.

■ Recharging the Battery

1. Connect the provided power adaptor to your PMP.
2. The recharging icon will appear on the LCD and the LED will blink.
3. After recharging finishes, the battery icon will blink and the LED will be turned on. Now you can disconnect the power adaptor.



Note

You can turn off the LCD while recharging to reduce recharging time by configuring the option in the Settings menu.

■ How to upgrade the firmware

1. Visit www.i-station.co.kr and download the latest firmware for your PMP.
2. Connect your PMP with your PC using the USB cable.
3. Confirm that the removable disk appears in the File Explorer window. Then, run the downloaded firmware program by double-clicking it.
4. Disconnect the USB cable.

5. After disconnection, your PMP will find the new firmware and start the firmware upgrade process.
6. Your PMP will restart after the firmware upgrade process finishes.
7. To confirm the firmware upgrade, you can check the version number during start-up or in the Help menu.

 Note

After the firmware upgrade process is complete, the copied firmware files will be automatically deleted. Please do not change the filename of the firmware. If changed, player will not upgrade the firmware.



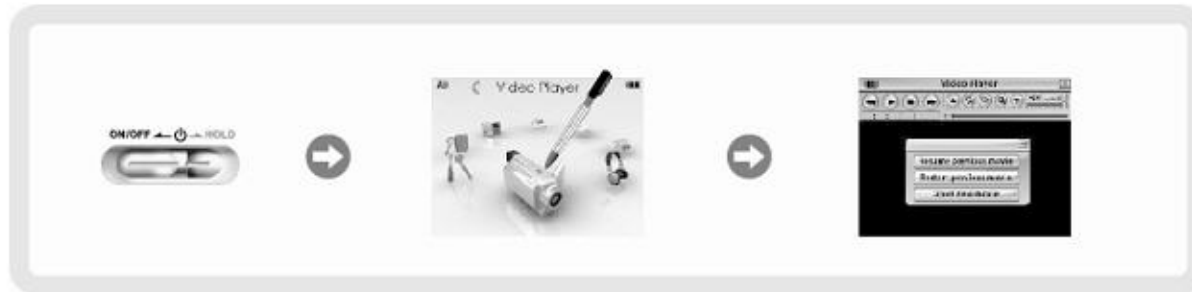
MULTIMEDIA PLAYER

3. Video Player

It explains Video player functions.

■ How to start the video player

A. Using the touch pen



1. Turn on your PMP.
2. Click the icon or character for the video player.
3. The video player menu will appear.

B. Using the buttons



1. Turn on your PMP.
2. Using the joystick, select the icon or character for the video player.
3. The video player menu will appear.

Note

You cannot turn on your PMP using the remote control. However, you can use it to turn your PMP off.

C. Using the remote control

1. Find the icon or character for the video player using Left and Right buttons on the remote control.
2. Start the video player by pressing Select button.

Note

Buttons on the remote control work the same as the corresponding buttons on your PMP.

Therefore, you can use the remote control like you use the buttons on your PMP. Hereafter, please refer to the “How to use buttons” for instructions on how to use remote control. A guide for the remote control will not be provided.

■ When the video player starts,

Three options appear when the video player starts.

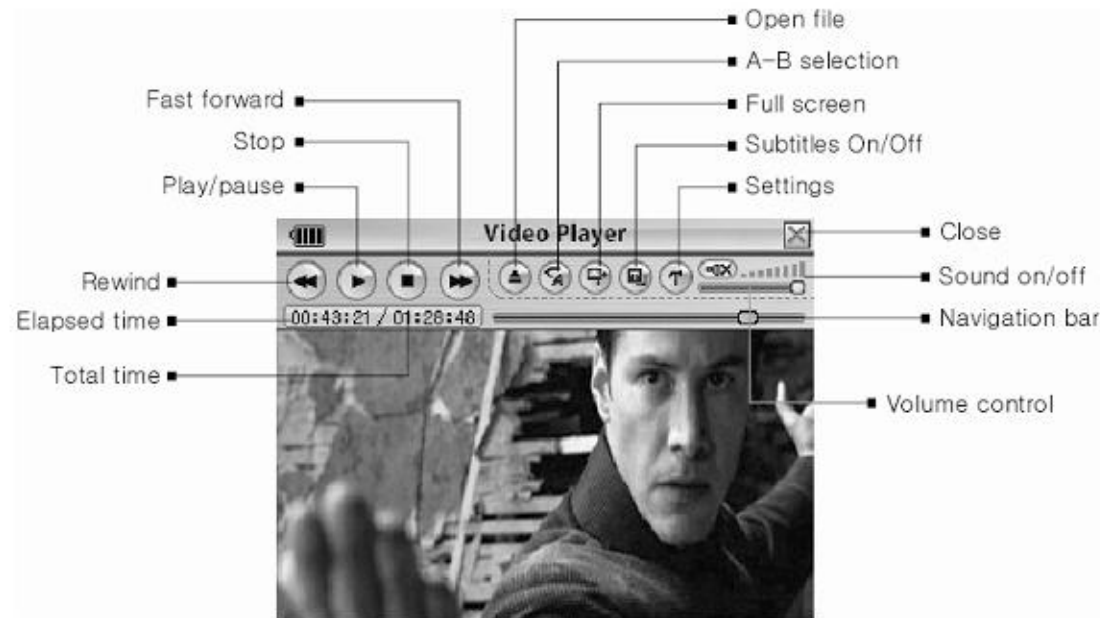
1. Resume the previous movie – Select this option to resume the most recently viewed movie from the point that it stopped.
This option is not available when you use the player for the first time or when the file is deleted.
2. Restart previous movie – Select this to watch most recently viewed movie from the beginning.
This option is not available when you use the player for the first time or when the file is deleted.
3. Open new movie – Select this to open a new movie file. This is the only available option when the video player is first used or the previous movie is deleted.


Note

The top menu appears when you touch the screen or use the buttons.

This menu will disappear after a certain time. The amount of time can be configured in the video player settings screen. Default time is 5 seconds.

■ Video player menu



 Note : You can control the volume with touch pen or the volume buttons on the right side of your PMP.

■ Play / Stop / Close


1. You can click or select the "Open new movie" option when you start the video player.
The file selection window will appear (Note: Use touch pen to "click", and buttons to "select")
2. Click or select a folder. Click or select folder once again to view subfolders.
3. Move joystick right and the selection bar moves to the file manager window.
4. Click or select a movie file. Click or execute the play icon to start movie playback.

 Note


- .To execute an icon, focus it by pressing tab key and activate it with the enter key.
- .You can only see video files with the Video Player File Manager. Audio files, text files and other files will not be shown.

5. Tap the screen or hit the Tab key to view the Video Player menu during playback.

6. Click or select the stop()icon to stop playback.

7. To playback a different movie, click or select the open() icon.


The video player file manager screen will appear. Files can selected as described above.


8. You can click or select stop() icon to stop playback. There will be stop confirmation popup window.

You need to click or select okay to stop playback.

■ Pause / Play

1. Tap the screen or hit the Tab key to view the Video Player menu during playback.



2. Click or execute pause() icon to pause.

3. Click or execute the play() icon to resume.

4. You can also pause and resume by pressing joystick the in.

■ Fast forward / rewind

1. Tap the screen or hit the Tab key to view the Video Player menu during playback.

2. To fast forward or rewind, click or select the Fast Forward icon() or Rewind icon().

It goes fast forward/rewind by 10 seconds for each touch or select.

Note

.In some cases, the movie file might not support this feature. You cannot fast forward or rewind in this case.

.There might be a small delay before the player processes your command. In this case, there will possibly be only sound for a moment.

3. You can go to random point of file by clicking on a point on the navigation bar. (This function is only supported with touchpen.)

■ Volume control and speaker / earphones selection

A. Using the touchpen





1. Tap the screen to view the menu screen during playback.
2. Click the volume control bar.
3. Drag volume controller to the desired position, or click on that point.



B. Using buttons

1. You can increase or decrease volume with the volume buttons on the side of your PMP.
2. You can listen to sound through the earphones when earphones are connected or through the speakers when the earphones are not connected.


■ A-B selection

1. Tap the screen or hit the Tab key to view the Video Player menu during playback.
2. Click or select A-B icon() at desired repeat starting point.
3. A-B icon will be changed from () to ().
4. Click or select A-B icon at desired repeat ending point. It will automatically loop through the selection.
5. Click or select A-B icon() to resume normal playback.
6. If you cannot view the menu, tap the screen or hit the Tab key.

Note

- .This feature may not be available as it is not supported by all video formats.
- .The actual selection points of the A-B process may only approximate those the user selected.
- Also, while looping you may only hear sound for a small period of time.

■ Settings and help

1. Call out menu screen with touchpen or tab button.
2. Click or select setting() icon, then set the options.
3. Click or select “okay” to save changes and exit settings.

4. Click or select "cancel" to exit settings without saving changes.

A. Using the touchpen

Click the tabs to view different configuration options. Click the options you prefer and click "okay" to save and exit settings.

If you click "cancel", you will exit the settings menu without saving changes.

B. Using buttons

1. Press tab key to view different configuration options.
2. Move joystick up/down to focus different setting items.
3. Press joystick in to select an item.
4. Move joystick to adjust setting value
5. Press the joystick in to set the option.
6. Select "OK/cancel" button to exit settings.



- LCD brightness : LCD brightness setting(0~100%)
- Video brightness : Video brightness setting(0~100%)
- Contrast : Video contrast setting(0~100%)
- Reset : Reset options to initial factory settings.



- Menu disappears after : Select amount of time before menu disappears.
- After current file finishes : Next action after current file finishes.
- Default aspect ratio : The aspect ratio when a video first loads.
- Reset : Reset options to initial factory settings.



● Help : Video Player help.



MULTIMEDIA PLAYER

4. How to use the Audio Player

This chapter explains basic use of the audio player.

■ Download Audio files from PC

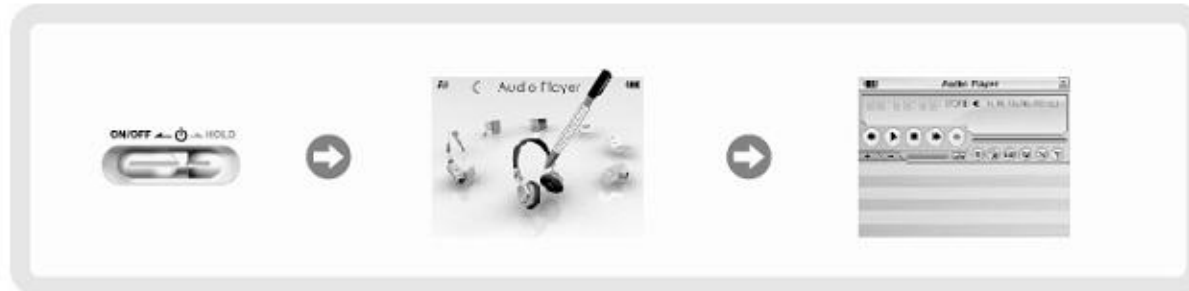
1. Connect your PMP with PC using USB cable
2. Confirm that the removable disk appears and start file explorer or a similar program.
3. Select files and copy them to the desired folder on the removable hard disk.

■ Start the Audio Player

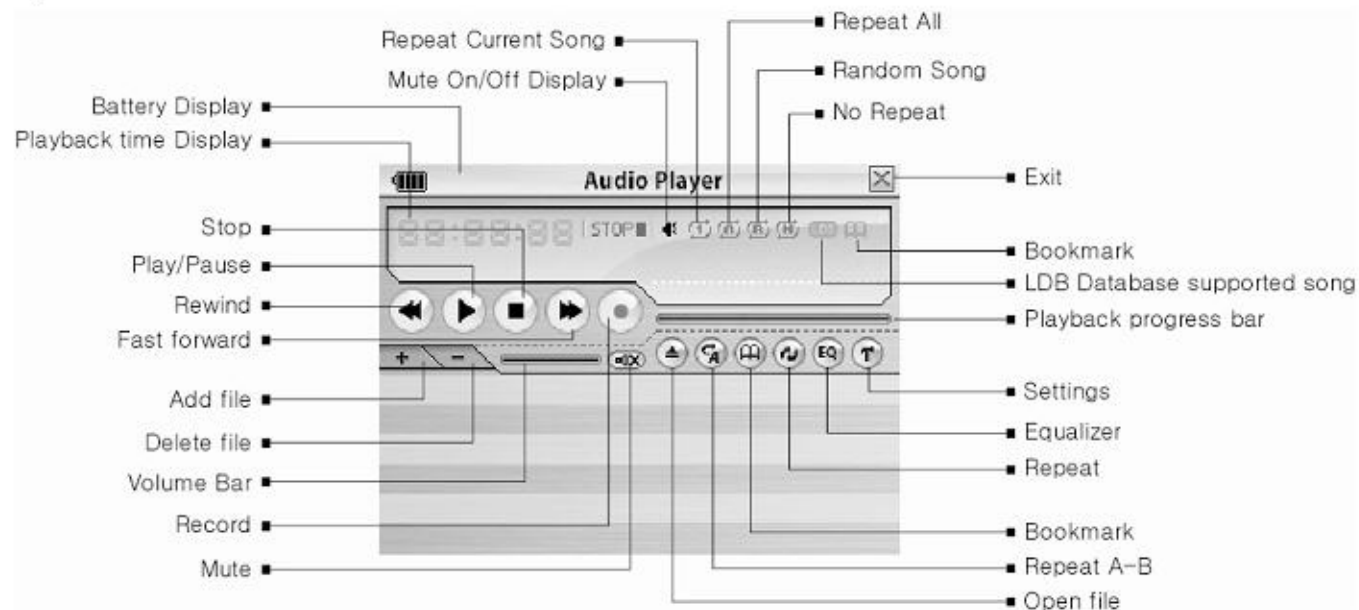
1. Turn on your PMP and wait for the main menu to appear.

You cannot turn on your PMP using the remote control. However, you can use it to turn your PMP off.


2. Scroll to the Audio player icon or character and click or select it.



■ Menu Display



■ Playback

1. Click or select the Open icon() from the manu.
2. The Audio File Manager appears. Click or select the desired folder.
3. To playback all files in the selected folder, click or select the "Select All" icon.
All files in the folder will be selected. Click or select the "Play Selected Files" icon.

Note

.If you already have a playlist, it gives you the option to delete the existing playlist. Select "Yes" to create a new playlist and delete the old one. Select "No" to add the selected files to the existing playlist.
.Hit exit if you do not wish to add any new songs. The player appears again.

4. To choose songs individually, click on the check box next to those songs you want to add to your playlist.

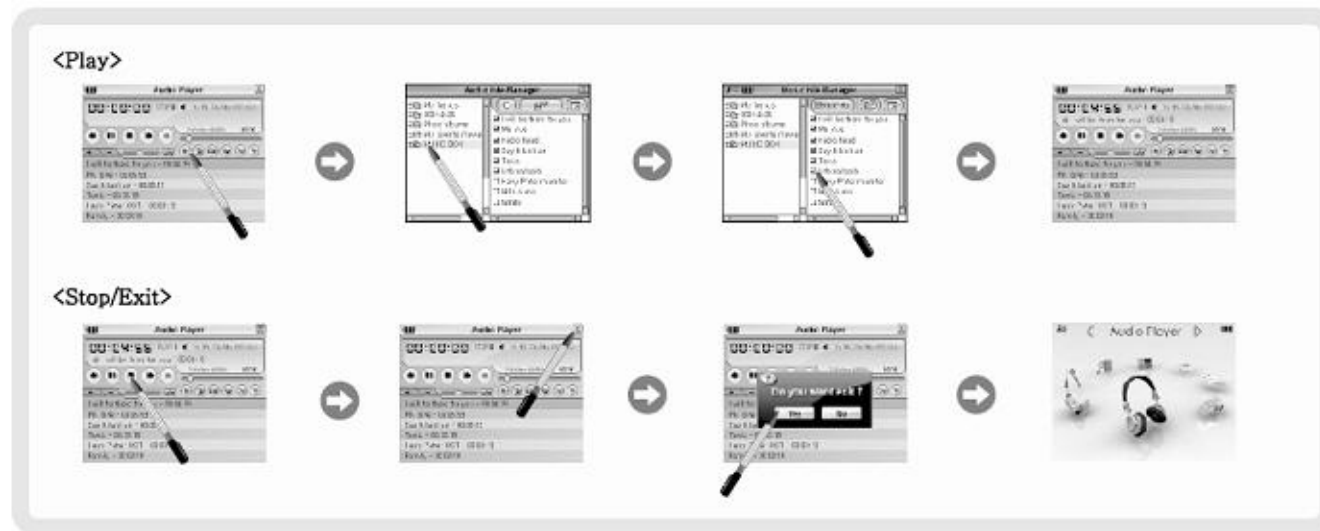
Hit the “Play Selected Files” icon to play those songs. If you wish to uncheck all songs, click the “Select All” icon twice.



Note

.If power saving mode is on, the LCD will dim after a certain amount of time.

.You can toggle power saving mode, adjust the time before dimming, and set the dimness from the Audio Player Settings menu.




■ How to use the Playlist

1. The Playlist lists all songs selected from the Audio File Manager.
2. During playback, to play the next song, click the Fastforward icon (⏩) or click joystick right.
3. During playback, to play the previous song, click rewind icon (⏪) or click joystick left.
4. To navigate through the songs in the Playlist, move the scroll bar up and down using touch pen or move the joystick up or down.
5. To start playback, click the file or press joystick in when the file is highlighted.
6. To add an extra file to the list, click or select the (+) icon.

When the file manager opens, select the file you wish to add by clicking it twice or selecting it with the joystick.

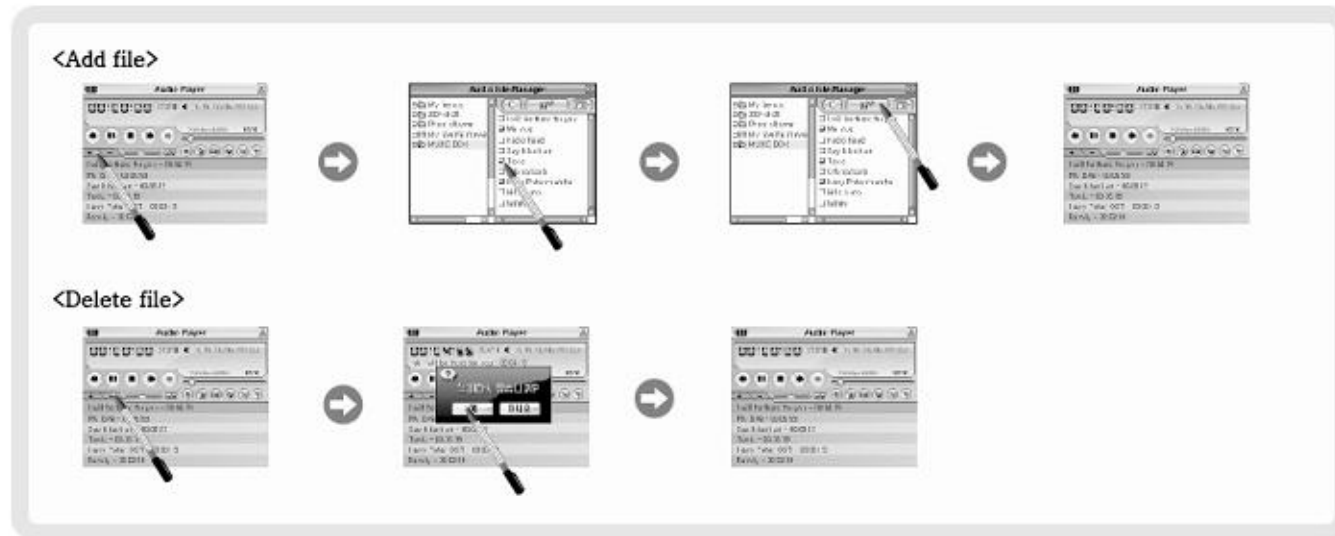
(Note: The file will not be added if it already exists in the playlist.)

7. To remove files from the playlist, highlight the desired file and click or select the () icon.




A confirmation message appears, click “Yes” to remove the file.

Note



In the case the file being played back supports LDB, lyrics will appear in the Playlist during playback.



■ Pause / Playback

1. To pause a song, click or execute the pause icon (). The icon will then change to the play () icon.
2. To resume playback, click or select the play icon ().
3. Pause mode is canceled if you stop playback or change the file.

■ Fast Forward / Rewind (Next/Previous track playback)

1. To fast forward the current track, press and hold the Fast Forward icon () or move and hold the joystick to the right.
While seeking, there will be no sound. Also, the seeking speed will increase over time.
2. To rewind the current track, press and hold the Rewind icon () or move and hold the joystick to the left.

While seeking, there will be no sound. Also, the seeking speed will increase over time.

3. To jump to a specific location, click the desired point on the Playback progress bar.

■ Volume Control and Speaker / Earphones


1. To listen through the earphones, plug the earphones in.
2. To listen through the speakers, unplug the earphones.
3. To adjust the volume, use the Volume bar or the volume buttons on the side of player.

■ Repeat A-B

1. Repeat A-B allows you to listen to a section of song over and over again.


To select the starting point of the section, click or select the () icon.


2. The icon should change from “A” to “B”. To select the end point of the section, click the (B) icon. Playback will now loop through that section.


3. To resume normal playback, click or select the () icon.


4. If you stop the playback or playback a different song, Repeat A-B will be canceled.


■ How to set the repeat mode

To switch the repeat mode, click or select the repeat mode icon().

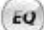
 : Repeat playback of the current song.

 : Repeat playback all files in playlist

 : Play songs in playlist at random.

 : Play through all of the songs in the list only once.


■ EQ Mode Setting

1. To switch the EQ setting, click or select the () icon.

(NORMAL/ROCK/RAP/GRUNGE/METAL/DANCE/TECHNO/COUNTRY/JAZZ/ACOUSTIC/CLASSIC/BLUES/OLDIES/REGGAE/OPERA/SWING)

2. If “User” EQ is selected, the user configured EQ found in Audio Player Settings is used.

■ Voice recording / Line-in Recording

1. To begin recording, click or select the () icon. A confirmation dialog will appear, click “Yes” to begin recording.
2. If a device is connected through the line-in cable, then that device will be the source for recording.

If not, the built-in microphone is the source.

The source is determined automatically based on whether the line-in jack is empty or not.

3. After recording begins, a dialog window appears displaying a “Stop Recording” button and the elapsed recording time.

Note


.All recordings are stored in the “record” folder and have an mp3 extension.

.Line-in recordings will have names like LINE_0000.mp3, LINE_0001.mp3.

.Voice recordings will have names like VOICE_0000.mp3, VOICE-0001.mp3.

4. To stop recording, click or execute the “Stop” icon.
5. The window will pop up with recording information such as recording time and file name.
Then it will finish recording when you click or select confirm icon.

■ Audio Player Settings / Help Menu

1. Click or execute the settings icon () to configure the Audio Player.
2. Refer to the tables below to see how to configure your Audio Player.



● User can set EQ.



● You can control LCD brightness when Power Saving Mode option is turned on.(The setting is available from 0 to 10.)



- View the help menu to see how to use the audio player.



MULTIMEDIA PLAYER

5. How to use the Photo Album

This chapter explains basic use of the Photo Album.

■ How to download pictures / photos from a PC?

1. Connect PMP to PC using the USB cable.
2. Wait for detection of removable hard disk drive and launch file explorer.
3. Select a folder that has pictures or photos in your PC.
4. On the removable hard disk drive, select or create a folder to copy the files into.
5. Copy selected files to the removable hard disk drive.

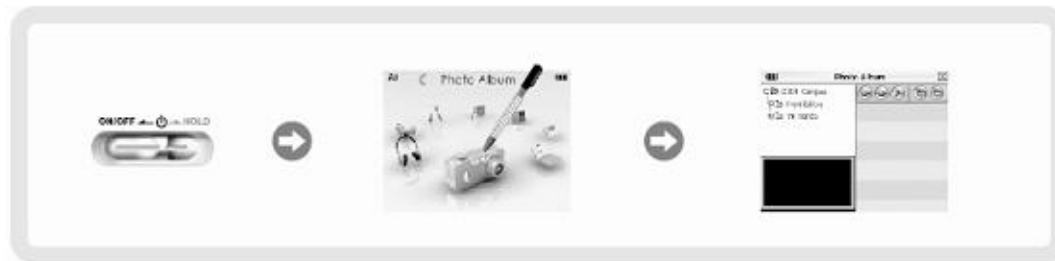
■ Getting started

1. Turn on PMP and wait for menu screen.

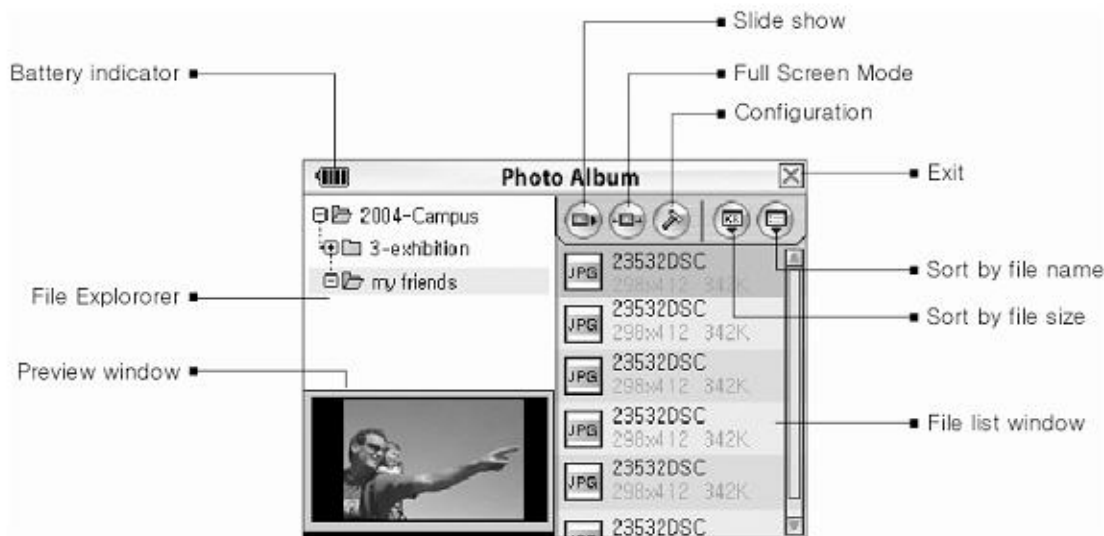


You cannot turn on your PMP using the remote control. However, you can use it to turn your PMP off.

2. Rotate icons to place the photo album icon in front.
3. When the photo album icon is located in front, click or execute the icon.



■ Menu screen



■ Preview

1. To see a preview of a photo, open a folder and click a file in the photo album menu.

You can see a preview of the selected picture in the bottom left corner.


2. You can also open a folder and select a file with the joystick.







If the size of the photo is large, it can take a long time to create a preview.


■ Full screen mode

1. If you click a photo file then click the full screen mode () icon, the photo will be displayed in full screen mode.
(If you select a photo file with the joystick and press the enter key, the photo will also be displayed in full screen mode.)

 Zoom : Please click arrow buttons on the LCD windows to move the picture.


 Return to normal size

2. To view the next photo, click the () icon or move the joystick right.
3. To view the previous photo, click the () icon or move the joystick left.
4. To rotate the photo 90° in the clockwise direction, click the () icon or move the joystick up.


- To rotate the photo 90° in the counter-clockwise direction, click the () icon or move the joystick down.
- To quit full screen mode, press the exit icon or press the joystick in.



■ Slide show

- To start the slide show, open a folder and click the slide show icon().
- In slide show mode, photos will be changed automatically after a set time.
- If you touch the screen or press any button, the slide show will stop.(The slide show time interval can be configured in the configuration menu.)

■ Configuratuon menu / Help

- To configure the photo album options, press the configuration menu icon().
- Configuration for each item can be found in the below pictures.



- Repeat configuration: Set number of times slide show repeats itself.
- Image interval time: Set the duration each image is displayed.



- Help tab: You can view the help for the photo album.



MULTIMEDIA PLAYER

6. How to use the Dictionary

This chapter explains basic use of the Dictionary.

■ Getting started

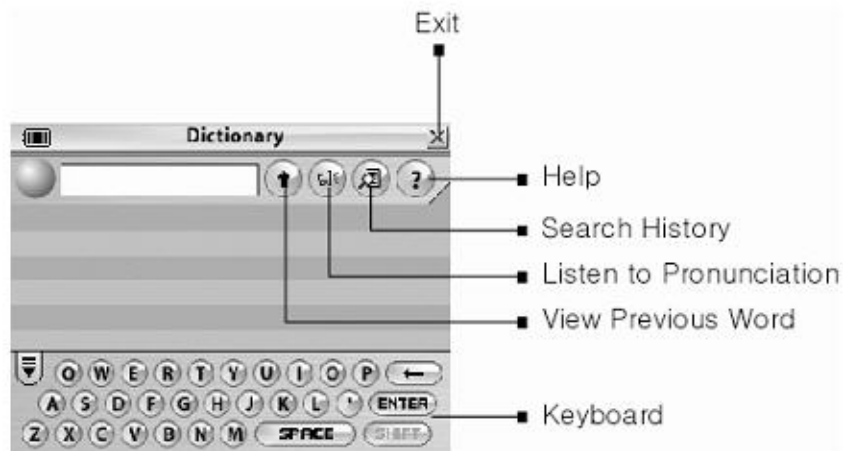
1. Turn on PMP and wait for the menu screen.
(You cannot turn on your PMP using the remote control. However, you can use it to turn your PMP off.)
2. Rotate icons to place the dictionary icon in front.
3. When the dictionary icon is located in front, click or select the icon.




🍏 Note

To use dictionary, you must use touch pen on the screen keyboard.
You cannot use the buttons or joystick for the dictionary keyboard.


■ Menu screen




■ How to hear pronunciation of an English native speaker (MP3 format)

1. If you click the pronunciation icon(), you can hear the pronunciation of found word.
2. You can adjust the volume with volume buttons.
3. If earphones are connected, sound is heard through the earphones; otherwise, sound is heard through the speaker.

■ Viewing previously searched for words

1. If you click the history icon(), you can view a list of the most recently searched for words.
2. If you click a word in the list, you can quickly view the entry for that word.

■ Help

1. If you click help icon(), you can view the help for the dictionary.



MULTIMEDIA PLAYER

7. How to use the FM Radio

This chapter explains what you have to know before listening FM radio.

■ Getting started

Click FM Radio icon on the main menu to activate FM Radio function.

1. Turn on your PMP.
2. Click the FM Radio icon.
3. Loading FM Radio menu.



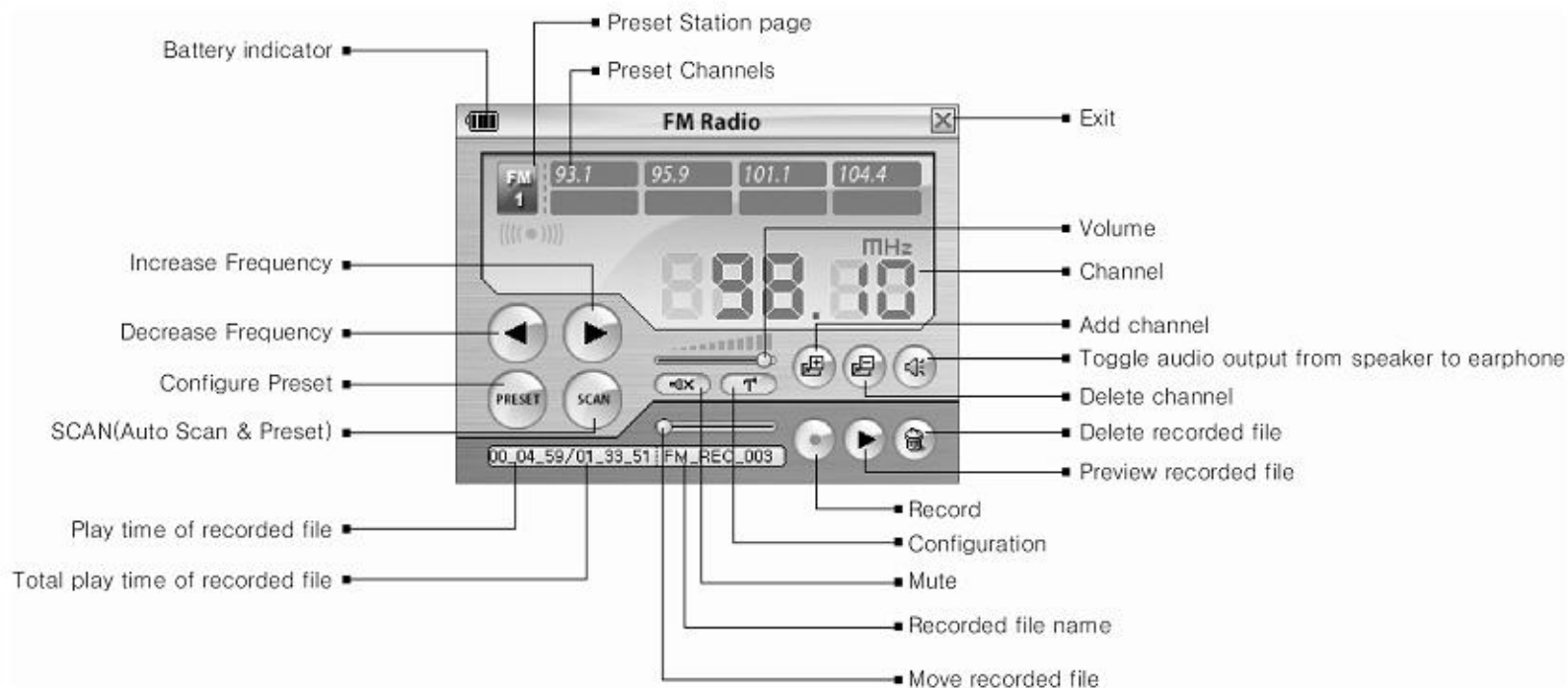
🍏 Note

If you activate FM Radio function without earphones, there will be a warning message.

To continue, plugin earphones, otherwise click "Exit FM Radio".

This warning message will also be shown when you unplug the earphone while FM Radio is activated.

■ Menu screen



■ Manually set FM station


1. Click (◀) / (▶) or quickly click joystick up or down, frequency will increase/decrease by one step.
2. Continue to adjust the frequency in this manner until a station is found.

■ How to use FM auto scanning



1. Click and hold (◀) / (▶) or move and hold the joystick up or down, frequency will increase/decrease automatically to search for stations.
2. When a station is found, automatic searching stops.
3. If no stations are found after going through all frequencies, automatic searching stops.
4. Automatic searching also stops when you touch the screen or press a button.

■ How to use Preset mode



If you save (preset) stations on the PMP, you can quickly recall those stations.

1. To start autoscanning for presets, click “SCAN()” icon.
2. Every tunable station is stored in an empty preset channel.
3. To listen to a preset station, click on the desired channel in the preset table.
4. To switch between preset channels, move the joystick left or right.
5. There are 2 Station Preset pages and each page can store 8 channels. To change the Station Preset page, click the Station Preset page icon.

■ Manually preset / remove stations

1. Click delete() icon to remove the currently selected preset station.
2. Click add() icon to store the current station into an empty preset channel.
3. If there is no empty preset channels, PMP displays a warning message and ignores adding adding the preset.

■ How to record FM

1. Click record() while listening to an FM station, a confirmation dialog box is shown.
Select “Yes” to start recording.
2. Click stop() to stop recording.
3. The most recently recorded file name and duration are displayed.

Note


.Recorded files are stored in RECORD folder with names such as FM_REC_001.mp3.

The three digits are automatically incremented for each new recording.


.If there is no space on the hard disk media or the battery is low, recording automatically stops.

■ How to playback recorded FM files.

1. You can playback recently recorded files within the FM menu.

2. Click the playback icon() to play the most recently recorded file. If there is no such file, this function is deactivated.

■ Volume control, Select speaker / earphones

1. To adjust the volume, use volume control buttons on the side of your PMP or the volume control bar icon on the screen.
2. To toggle between earphones and the speaker, click the toggle speaker () icon.

■ Configuration/help




●Region select: Select the FM broadcasting format for your region.

●Autoscan Sensitivity :

If you select High, PMP will search for only very strong signals.

If you select Medium, PMP will search for moderate and strong signals.

If you select Low, PMP will search for weak, moderate and strong signals.

 The values in picture show the default settings.





MULTIMEDIA PLAYER

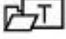

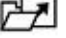

8. Extra Features

This chapter explains how to use the other features of your PMP.

■ Text Viewer – How to download text files from a PC

1. Connect PMP to PC using the USB cable
2. Wait for detection of removable hard disk drive and launch file explorer.
3. On your PC, select a folder that has desired text files.
4. Choose those files which you'd like to copy.
5. Use your right mouse button to copy selected files.
6. On the removable hard disk drive, select or create a folder to copy the files into.
7. Right click and select paste to copy the selected files.

■ Text Viewer – How to open and read text files

1. To open a new file, click the open file icon().
2. The Text File Manager will open. Use the touchpen to select a folder on the right. Then on the left click on the file you wish to open.
Finally click the Read Text icon() to view the text.
3. To open a file with the joystick, from the Text File manager window navigate to desired folder by moving joystick up/down and pressing it in.
To select a file, move the joystick right, then move it up or down until the desired file is highlighted.
To open the file press the joystick in, or tab to the icon() with the "Tab" key and activate it with the "Enter" key.
4. If the file is open, you can drag the scroll bar on the right side to scroll up and down.
5. Please click () to listen to the music. You can edit the playlist at the audio mode.
6. When you open the Text Viewer again, it opens to the position that was last read.

Note

The size of text file should be less than 2MB

Text viewer support ".txt" format only(word format is not supported)

■ Calculator

Functions like a normal calculator.

■ User Guide for the Scientific Calculator

a. How to use parentheses “()”.

Use parentheses around any expression that you want to be calculated first. The multiplication sign can be omitted when preceding parentheses ().

* Example : $9 \times (2+3) \Rightarrow 9(2+3)$

b. Exponent symbol (Scientific notation)

Numbers will be fully expanded when within the range of 10 to the (+/-)8.

From 10 to the 9 and beyond, scientific notation with the exponent symbol ‘e’ will be used.

* Example: When you calculate 10^{10} , it is expressed as “1.0e10”.

c. Representing negative numbers

Subtraction and negative numbers both use the “-” symbol. So, to avoid conflicts, always use parentheses “()” around your negative numbers.

* Example: When you subtract -1 from 10, express it as $10-(-1)$.

d. Square root operation

There is no special button for the square root operation. To calculate the square root of 2 ($\sqrt{2}$), enter $2^{0.5}$. These are mathematically equivalent.

$2^{0.333333}$ is the cube root of 2.

* Example: the square root of 2 = $2^{0.5}$ / the cube root of 2 = $2^{0.3}$

e. Using the trigonometric functions (sin, cos, tan)

Trigonometric functions assume values are in degrees (°). The multiplication sign can be omitted before sin, cos, or tan.

* Example: sine of 45°(degree) $\Rightarrow \sin 45$

f. Usage of the logarithmic functions (ln/log)

“ln”, the natural log, is log with base “e”. “Log” means the common log which is log with base “10”.

The multiplication sign can be omitted before ln or log.

* Example: $4 \times \log 2 \Rightarrow 4\log 2$

g. Commas in large numbers

For easy to read, there’s “,” on every three cipher of positive numbers. We don’t represent “,” in decimals.

* Example : $1234.5678 \Rightarrow 1,234.5678$

h. Memory

MC (Memory Clear): Clears the memory.

MR (Memory Recall): Recalls the most recently saved number.

MS (Memory Save): Saves the current displayed number overwriting any previously stored numbers.

This operation does NOT save operators. Saving operators leads to undefined results.

Incorrect examples: $2+3$ (fails because there's an operator) $\rightarrow (2.2)$ (fails because of the parentheses)

Corrects example : $-1.234, 1.234$

■ Help



● Explains how to operate your PMP.



● It displays the current firmware version as well as the information about the player.

■ File manager

You can navigate through and delete files on your system.

■ System options



●LCD Brightness: Set the global LCD brightness. You can also set the brightness locally in certain modes.

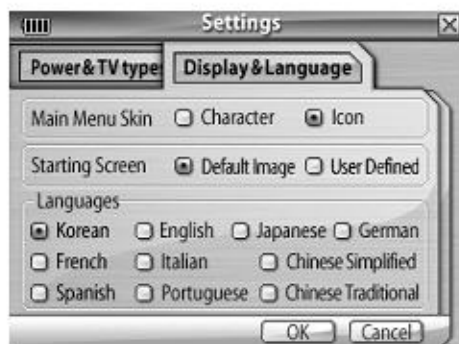
●Auto power-off: If the player is not in use (no input) for the specified time, it automatically powers off.

Depending on the mode, this can also be done locally.

●LCD Power (USB connected) : In order to make the LCD life longer and save on power, the LCD can be turned off when the USB cable is connected.

●LCD Power(Charging): In order to make the LCD life longer and to quicken the recharging time, the LCD can be off while the battery is charging.

●TV Type : Select the format of your TV. PAL is automatically selected when you select Europe in the FM Radio Settings screen.



●Main Menu Skin : Choose the skin you prefer. Skins will be continuously updated.

●Starting Screen : Sets the startup image to "IMAGE\Wstart.jpg".

●Language Setting : All PMP text will be displayed in the chosen language.

(Korean, English, Japanese, German, French, Chinese Simplified, Chinese traditional, Spanish, Italian, Portuguese)



MULTIMEDIA PLAYER

9. Product Information

This chapter contains Troubleshooting, FAQ, Technical Specifications, Warranty and Contact Information.

■ How to use your PMP with TV

Your PMP can use your TV as a display. This feature is useful when you watch movies and/or photos together with your family. It provides superior video quality especially when you connect with S-Video.

A. How to connect with TV

1. First, you should check your TV format. It will be the one between NTSC and PAL.

Please select the correct TV format as shown in the following pictures.

2. Turn on your TV and select the channel for the video input. Please refer to the TV's manual to set the correct channel.

3. The player supports 2 kinds of video connections. Please select a video connection with TV.

Please confirm which kind of video connection your TV supports and connect the player with the TV according to the supported connection.

. Connection through S-VIDEO Cable : Connect one end of the cable in the S-VIDEO output Jack of the player and the other end in the S-Video input jack of the TV

. Connection through AV-IN(CVBS) : Connect one end of the cable in the TV output Jack of the player and the other end in TV AV-In(CVBS) Jack.

4. Next, Connect Audio Cable. Please connect one end of the cable with the Audio jack on TV and the other end to the earphone jack on the player

5. Turn on your PMP. After boot-up, LCD will be turned off automatically. Then, PMP will display images on your TV.

You may also connect cables after you turn on your PMP.

6. After TV connection, you can control your PMP using switches or remote controller. You can use your PMP with the same way.



S-Video jack



AV-IN (Composite) jack



Audio jack

B. Check points when you connect your PMP with TV

If your PMP cannot display images on TV, please check the following items.

1. Is the TV format set correctly?

A. Your PMP may not display images on TV if you chosen wrong TV format.

2. Is the cable connected in the correct way and in correct position?

A. If the cable is connected in wrong way or in wrong position, your PMP may not display correctly.

3. Is the TV channel set correctly?

A. TV channel should be set to display external video signals. If it was set to wrong channel, it will not display any images.

4. Is the LCD still turned on?

A. If your PMP displays images on TV, LCD is supposed to be turned off. If the LCD is still turned on, please check the connection and the jack.

If everything is OK but LCD is still on, please contact our customer support service.

■ Adjusting the display

. This feature only works when the AV-IN(CVBS) or S-VIDEO cable is connected with a TV set.

. This feature only works during video playback.

. To switch between modes, hit the "Execute" key during playback. The movie will pause while adjustments are being made.

(ZOOM IN/OUT → screen position → location of the subtitle)

. To resume playback, press the joystick key in on the player or the "Enter" key on the remote control.

A. Zooming in and out

- In zoom mode, move the joystick up, down, left or right to zoom in and out.

- After adjustment, press the joystick in to save the configuration.

← To zoom in horizontally

→ To zoom out in the horizontal

↑ To zoom in vertically

↓ To zoom out in the vertical direction

B. Adjusting Screen position


- In screen positioning mode, move the joystick up, down, left, or right to adjust the position.
- After finding a desirable position, press the joystick in to save the configuration.

C. Moving the subtitles

- Move the joystick left, right, up and down until to move the position of the subtitles.
- After finding a desirable position, press joystick in to save the configuration.

D. Resetting the Screen settings

- Go to the "Video Player Settings" menu
Press the "Reset" button to return the screen settings their default configuration. (Screen location/Screen size/Subtitle location)
- If you press the "Full screen" button on the Video Player, the screen position and size will return to their default configuration.

-  . "Settings" are saved after you disconnect the cable from the TV and the ratio of TV should be kept as is.
 - . After disconnecting the TV-OUT, the movie will playback will continue.
 - . The size of the display has a lower limit of 64x64 and an upper limit of 640x455
 - . The subtitles have an upper position limit due to interference with the menu bar.

■ Troubleshooting and Tips

.To get further information about your PMP, visit www.i-station.co.kr or our company website at www.digital-cube.co.kr.

.If your PMP is not working properly, use this troubleshooting guide to diagnose and fix the problem.

If the problem persists, contact our customer service centre.

1. Has the battery been charged?
2. Has the battery been inserted correctly?
3. Has the player been powered on?

4. Is the hold key switched on?
5. Is the file which you have chosen a valid file? Has it been played on your PC without any trouble?
6. According to the specification, is the file type supported by this player?

■ Frequently Asked Questions (FAQ)

Please review these questions and answers to diagnose and fix any problems with your PMP.

If the problem persists, contact our customer service centre.

Q. Why won't the player power on?

A. Make sure that the Hold Key is not switched on and that the battery is charged.

Charge the battery for 4 hours then try turning it on again.

Q. Joystick and buttons don't work or function improperly.

A. Make sure that the Hold Key is switched off.

Q. The volume buttons do not adjust the volume.

A. Make sure that the Hold Key is switched off. Please connect earphones or external speakers to make sure you can listen from those devices.

Q. The remote control is not working.

A. If you are too far from the player, the remote control will not work. Come closer to the player and try. Also, check the batteries.

Try changing them or reinserting them properly.

Q. The touch pen does not work.

A. You may need to recalibrate the touch screen. To do this, use the buttons and joystick to go Settings menu under Display & Language and select the Calibrate button. Then use the touch pen to repeatedly hit the little cross hairs.

Q. Cannot play video files.

A. Try playing the file on a PC first. If it still doesn't play, then it may be a damaged file. If it does play, check the file type and bitrate and confirm that they are supported by the player. If it is not supported, then you need to convert the file with the converting software that was supplied with your PMP.

Q. During video playback, fast forward and rewind don't work.

A. The file may not contain timing information. In this case, it also doesn't work when playing the file on a PC.

Q During video playback, nothing appears on LCD but sound can be heard.

A. This occurs sometimes as the playback begins and your player is synchronizing video timing information.

However, if this problem persists for several minutes, then it may be an unsupported or broken file. Look at "Cannot play video files" for troubleshooting this problem.

Q. During video playback, repeat "A-B" doesn't work properly.

A. The file may not contain timing information. In this case, it also work't work when playing the file on a PC.

Q. Cannot find a file with the file manager.

A. The video file manager only displays recognized video files while the audio file manager only displays recognized audio files.

To view files of any type, use the file manager found in the main menu.

Q. Cannot play audio files with the audio player.

A. First, check whether the file can be played on PC. If there are no problems with the file, confirm that the file type and the bitrate are supported by your PMP. If they are not supported, then you need to convert it with converting software.

(Unfortunately, we don't supply audio codec software; however, you can find the shareware software from the internet.)

Q. Sound doesn't come from the speaker.

A. Make sure the earphones are unplugged, and check the volume. Also, make sure you can hear sound when using earphones or external speakers.

Q. Cannot listen to FM radio.

A. The earphones act as an antenna so they need to be plugged in. Also check the Speaker toggle icon; it may be switched to earphones.

Click or select this button to toggle it to speakers again.

Q. Cannot find FM radio stations.

A. Make sure that the earphones are connected properly. Also, make sure you are in a location that can receive radio signals.

Q. Cannot open pictures with the photo album.

A. Make sure the files are "jpg". If they are "jpg" then check the size of each file, if it's very large it may take some time before opening.

Q Cannot hear English native speaker when using the dictionary.

A. Not all words are supported. Some are not supposed to be supported.

■ Player specifications

A. General

- . Dimensions: 123.0 X 76.8 X 21.5 mm
- . Player type : Plug & Play (removable Mass Storage Device)
- . Weight : 246g (including battery)
- . Touch screen : Easy to use touch screen with familiar MS windows interface.
- . USB download : USB 2.0 high speed, 18MByte/sec
- . HDD memory : 20/30G
- . Battery : Charging time(4 hours), quantity(2700mAh), Lithium Polymer
- . Playback time : Video – 5 hours, Audio – 10 hours (LCD off)
- . Supported languages : Many languages from all over the world.
- . Operating temperature : 0°C ~ 45°C

B. Video

- . Supported files : All versions of DivX and Xvid/MPEG1(VCD)/MPEG2(DVD)/MPEG4
(ASF, WMV need to be converted with the converting software)
- . LCD : size – 3.5" (320x240 pixels), 260,000 colours
- . Frame : 30 frames per second
- . Bitrate : 8Mbps (720x480, 30fps)

C. Audio

- . Supported file types : MP3, WMA, OGG, AC3, AAC
- . Channels : 2 channel stereo
- . Frequency bandwidth : 20Hz ~ 20KHz
- . Output : 50mW (25mW + 25mW)
- . Noise ratio per signal : more than 85 dB

. Total harmonic distortion : < 0.1%

D. Dictionary

. Type : English-English dictionary

. Features : Contains over 230,000 words / Provides the native speaker's pronunciation

E. TV out support

. Type : NTSC / PAL

. Form : CVBS / S-Video

F. FM radio

. Frequency bandwidth : 76~108 MHz

. FM recording format : MP3

. Frequency : Autoscanning (can set upto 16 channels) / Supports frequency ranges for every country

G. Voice recording

. Format : MP3

. Maximum recording time : 320 hours (20GB)

. Recording bitrate : 128Kbps

H. Image View

. Type of file : jpeg

. Size : Less than 12 million pixels

I. Others

Calculator / Text Viewer / Mounted Speakers / Direct Encoding

J. PC System

- . Microsoft Windows 98SE/ME/2000/Xp, Mac OS version 9.1 or higher
- . Pentium III 500MHz or higher
- . 128MB RAM memory or more
- . USB Port (2.0 strongly recommended)
- . HDD 1GB or more
- . CD-ROM Drive
- . SVGA or better